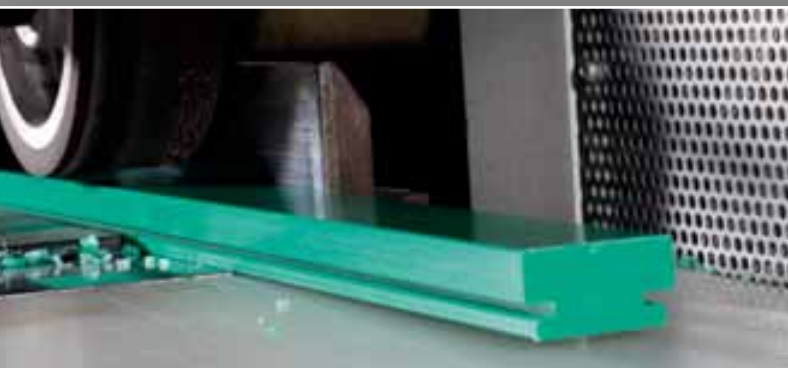


smooth. good. informed.



CHAIN, BELT, AND SLIDING GUIDES

















**ASA/JIS
EDITION**

CHAIN, BELT, AND SLIDING GUIDES – TABLE OF CONTENTS

Introduction /Pictogram legend	2
Overview of Chain Guides	3
Special Profiles	4 – 5
Chain, Belt, and Sliding Guides	6
Construction with Plastic Guides	7
Steel C Profiles	8
Selection Table for Steel C Profiles	9
Fastening of Steel C Profiles	10
T-Head Bolts	11
Fixing the Steel C-Profile with stud welding bolts	12
Chain Guides for Roller Chains as per DIN 8188	13 – 29
Types: T, CT, T-Duplex, CT-Duplex, T-Triplex, CT-Triplex, TU, CTU, TS, CTS, U, CU, K, CK, CKG, CKG 14H, CKG 15V, ETA	
Chain Guides for Round Link Chains as per DIN 766/764	30 – 31
Types: R, CRU, CRG, CRO	
Overview of Belt Guides/Belt Guides	32 – 39
Types: RR, RRC, KR, KRC, FR, FRC, FK, FKC	
Chain Racks	40
Profiles for Conveying and Transportation	41 – 49
Sliding Guides, Type CF, Rail guides as insertion and Clip Profiles, Bands, Slip-On Profiles, Profiles for Slat Band Chains, Curve Guides for Slat Band Chains	
Guides for modular belts	50 – 51

PICTOGRAM LEGEND

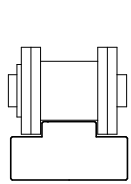
Profiles – standard	Variable – optional possibilities
 Original Material "S"® green	 Length of plastic guide and steel C profile in mm
 Ex stock in Material "S"® 1000 green	 Standard design in galvanized steel
 Original Material "S"® black antistatic	 In intermediate dimensions and other materials if required
 Medium tolerances on plastic profile section as per DIN ISO 2768, tolerance class m	 Only suitable for outer facing connecting link
 Length tolerance Plastic guide +0/+7mm Steel C profile +0/+40mm	 6,000 mm steel profile length possible
 Profile section for two-part design	 Available ex stock in 1.4301 (V2A)
 For use in explosion hazard areas (manufacturer's declaration)	 Profile section for two-part design

OVERVIEW OF CHAIN GUIDES

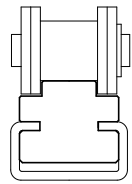
For roller chains (DIN 8188) and round link chains (DIN 766/764)

Murtfeldt offers an extensive standard range of guides for roller chains. We have a total of 20 different types of guide for roller chains and four for round link chains. You can also choose between our high-quality Original Material "S"[®] Green and our more economical Material "S"[®] 1000 Green.

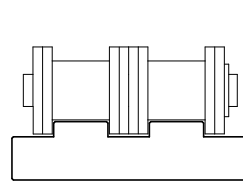
Chain guides for roller chains as per DIN 8188



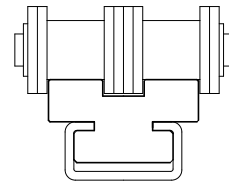
Type T – page 13



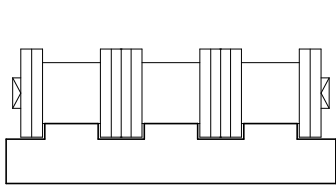
Type CT – page 14



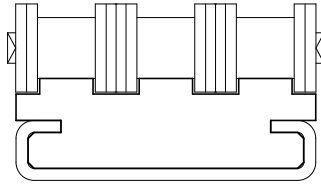
Type T-Duplex – page 15



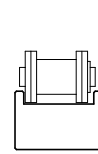
Type CT-Duplex – page 16



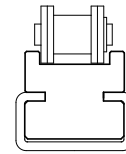
Type T-Triplex – page 17



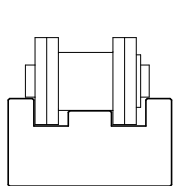
Type CT-Triplex – page 18



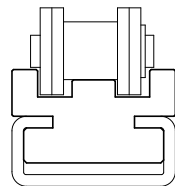
Type TU – page 19



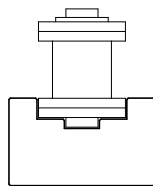
Type CTU – page 19



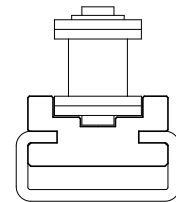
Type TS – page 20



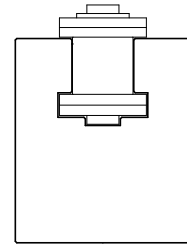
Type CTS – page 21



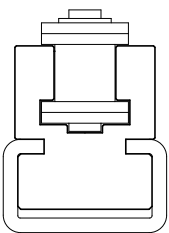
Type U – page 22



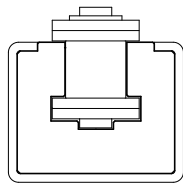
Type CU – page 23



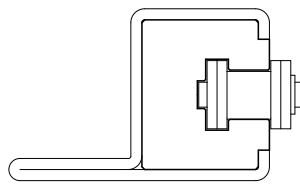
Type K – page 24



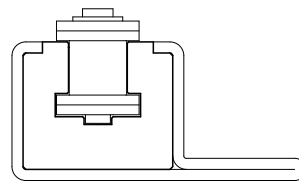
Type CK – page 25



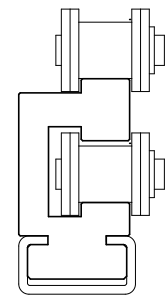
Type CKG – page 26



Type CKG 14H – page 27

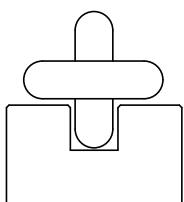


Type CKG 15V – page 28

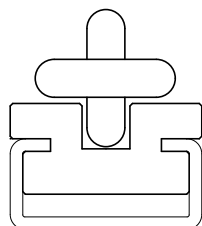


Type ETA – page 29

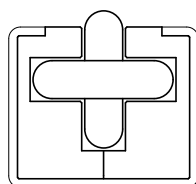
Chain guides for round link chains as per DIN 766/764



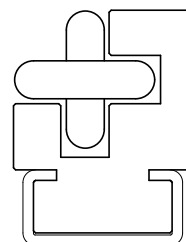
Type R – page 30



Type CRU – page 30



Type CRG – page 31



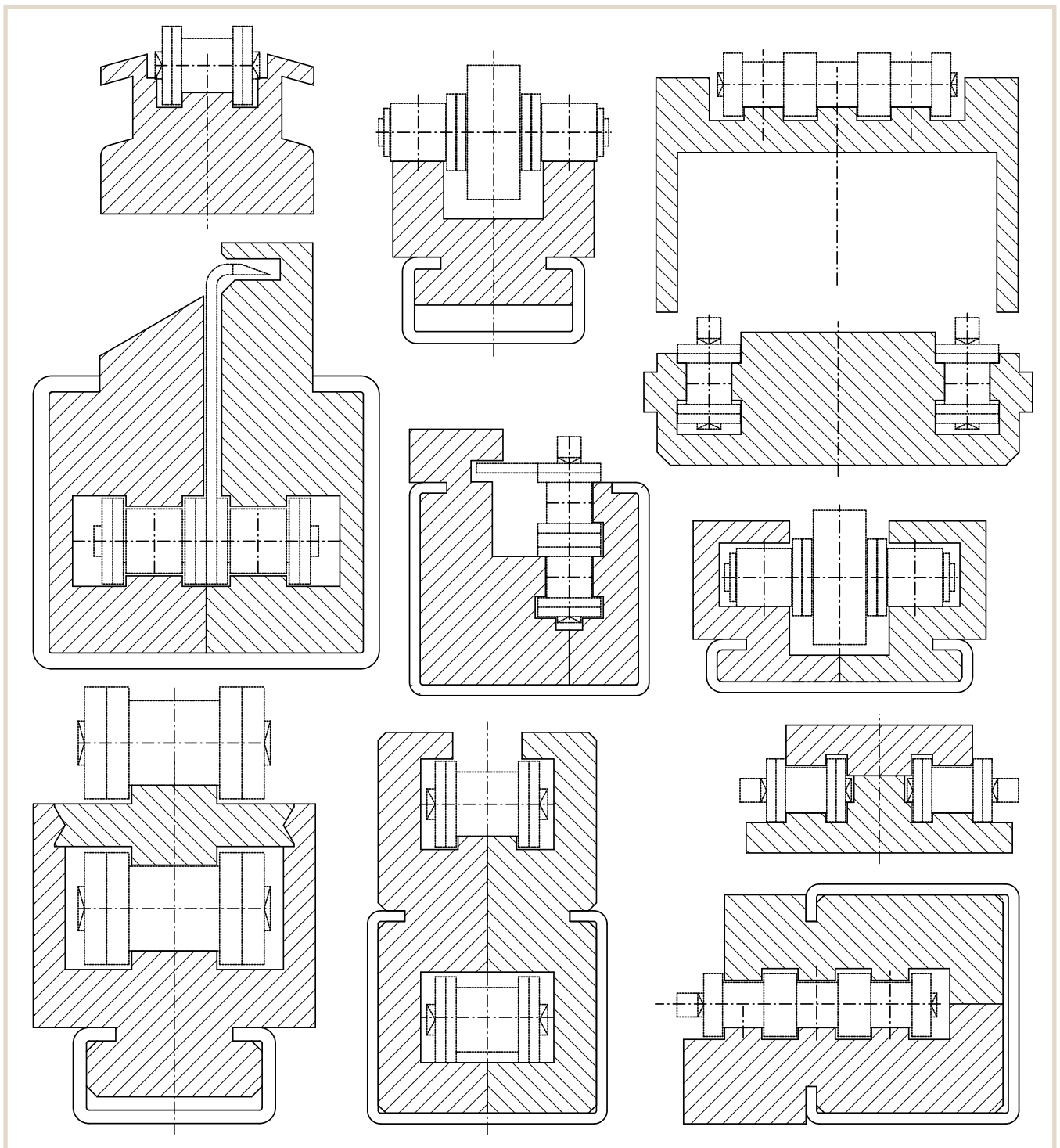
Type CRO – page 31

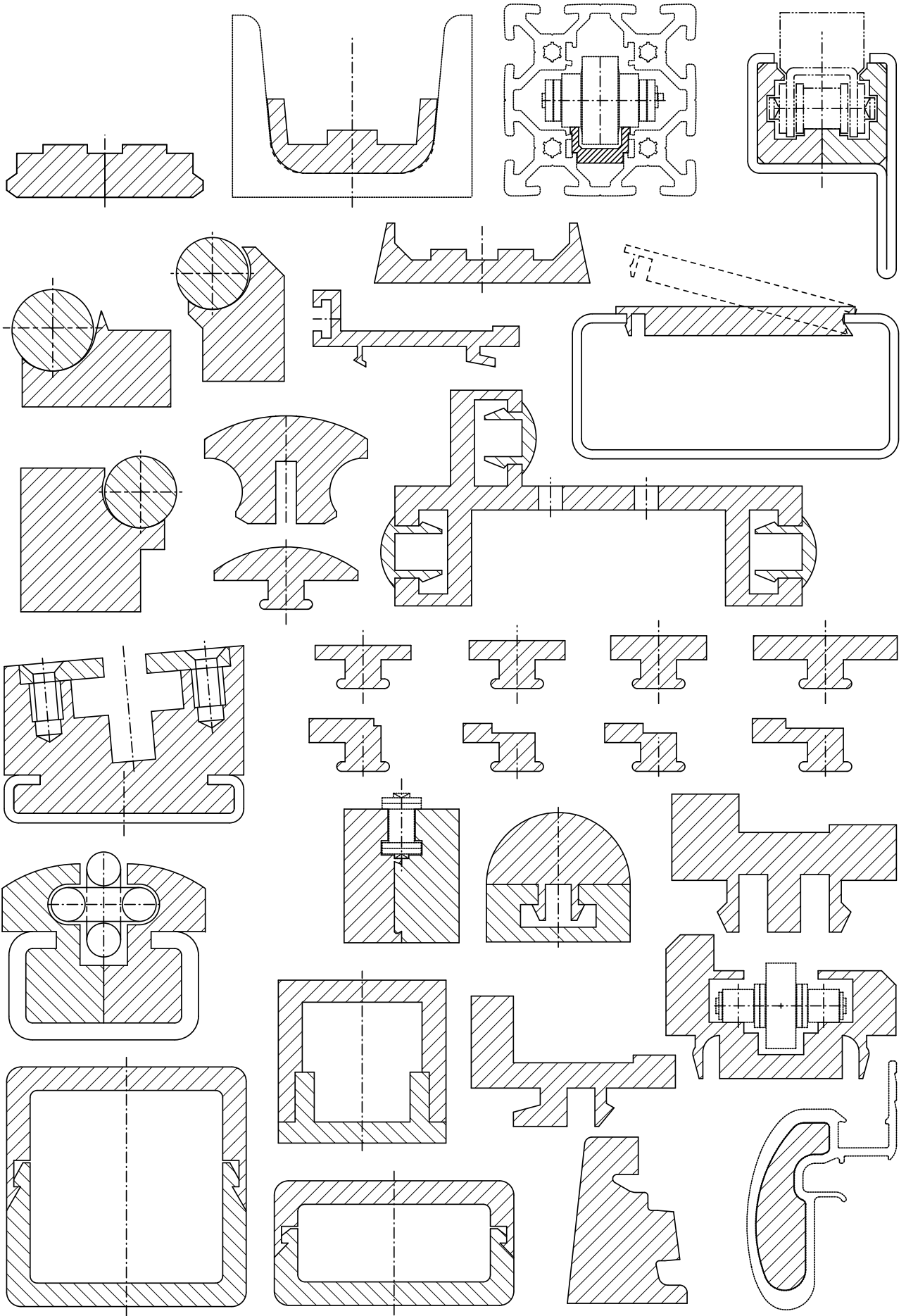
SPECIAL PROFILES

When the standard designs are not enough

Our standard range of profiles offers many solutions for equipping your machines. Should we not have the design you require in our range, we would be happy to manufacture it to your individual specification. Get in touch with our application engineers or our Field Sales team.

We can also offer you the option of processing documents and drawings online and in real time together with our staff.





CHAIN, BELT, AND SLIDING GUIDES

Chain guides

Where there is friction, there is wear. This is especially the case for applications where metallic materials are used. For example, for chains that run on metal guides, regular lubrication is absolutely vital. The aim is to achieve quiet, smooth running and long-term functional reliability.

Murtfeldt chain guides protect your chains. They guarantee optimum running properties at the same time as extremely high wear resistance. The tried-and-tested Material "S"[®] and the economical alternative "S"[®]1000 have ideal material properties that make them well-suited for use as guides for roller and round link chains.

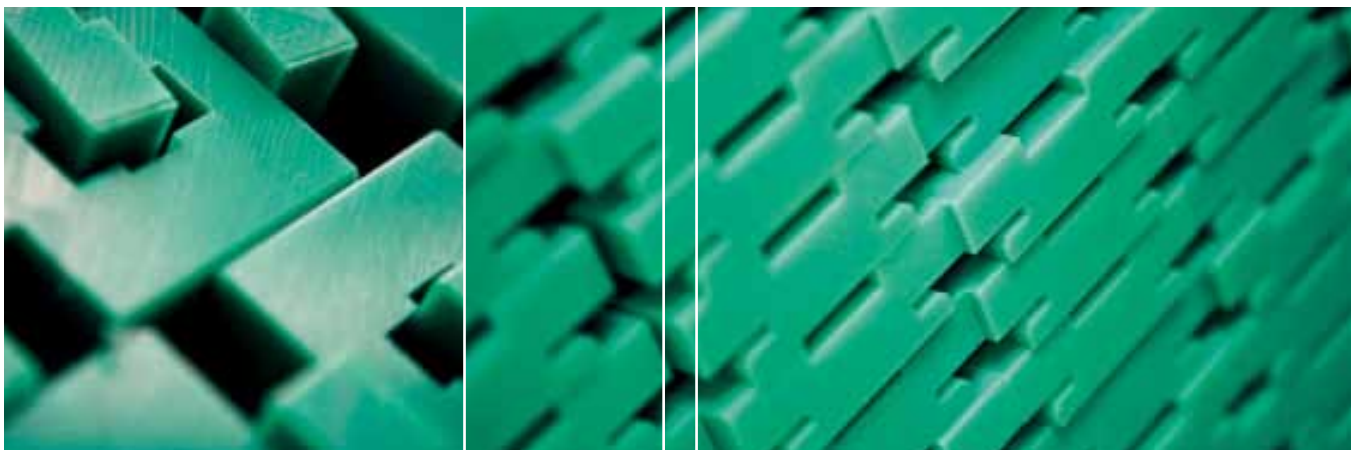
Stock and individual production

Our warehouse stocks an extensive range of guides for roller chains that comply with DIN 8188 and round link chains that comply with DIN 766 and DIN 764.

In addition, we can manufacture economical and reliable special guides in accordance with your specifications – even in small lot sizes.

Advantages of Murtfeldt chain guides

- High wear resistance
- Very good slide properties
- Self-lubricating (no need for any oil lubrication at all)
- Extremely impact and break resistant, even at very low temperatures (up to -450°F)
- High chemical resistance
- Vibration-reducing properties
- No moisture absorption
- No corrosion
- Approved for use in the food industry – FDA and EU (Original Material "S"[®] [FS])



CONSTRUCTION WITH PLASTIC GUIDES

Construction using thermoplastics requires careful consideration beforehand. The conditions of use have a direct influence on the material selection and design of the plastic guides. You should answer the following questions in advance:

■ To what static and dynamic loads will the guide be exposed?

■ To what environmental factors, such as chemicals, hot or cold water, steam, or contaminants will the material be exposed?

■ Will there be direct contact with foods?

■ How high is the working temperature?

■ How is the guide to be attached to a C profile (screwed on or inserted)?

In comparison with metallic materials, thermoplastics have a higher coefficient of linear thermal expansion.

Calculation

When calculating the expansion, the anticipated difference between the assembly and minimum and maximum working temperatures is to be taken into account. The coefficient of linear thermal expansion of the material is used to precisely calculate the maximum elongation when the temperature rises and the reduction when the temperature drops (see formula below). The required movement space for the material can thus be taken into account before installation takes place. There are different fastening options depending on the application (see page 10).

Formula for calculating elongation

$$\Delta L = L \times \alpha \times \Delta T$$

ΔL = Elongation

L = Initial length

α = Coefficient of linear thermal expansion

ΔT = Temperature difference in °F



STEEL C PROFILES

Regardless of the fastening method chosen, you should design your plant so that the material can expand. The easiest and most efficient fastening method is to fasten the guide using our steel C profiles. Unlike metals, thermoplastics are particularly predisposed to an increase/reduction in length when temperature variations occur. Mounting a guide in a steel C profile makes sense because of the freedom of movement afforded to the slide bar. This method also makes it easy to replace plastic guides. Steel C profiles also act as stable fasteners and can be welded or screwed on as required. We recommend the use of DIN screws or special assembly using T-head bolts (see page 10–11). We also offer fixing of steel C profiles with stud welding bolts.

AVAILABLE VARIANTS

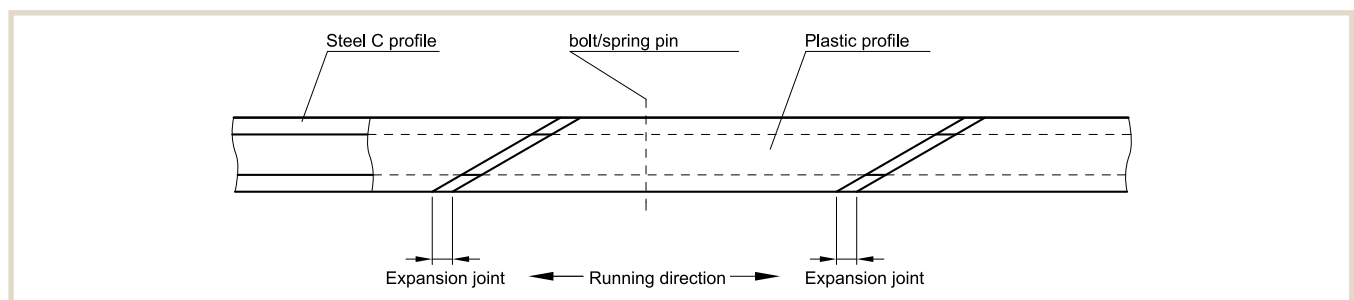
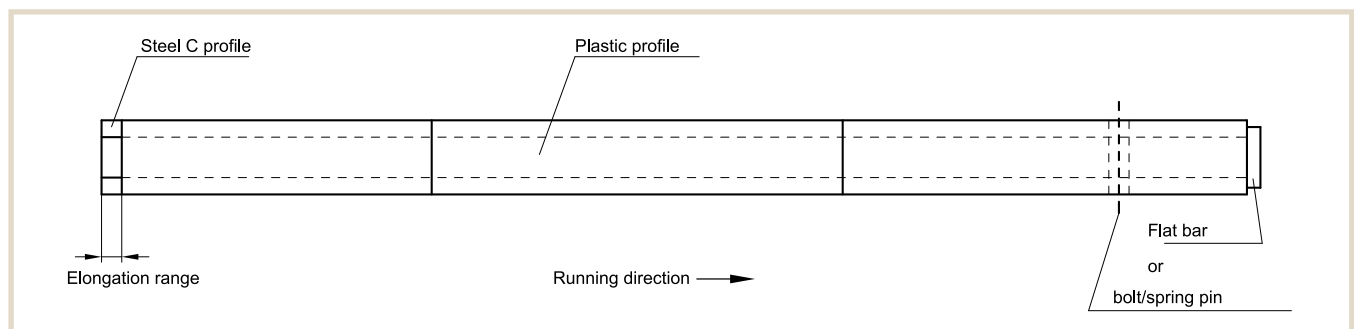
- Galvanized (Stocked)
- Stainless steel (Stocked)
- Untreated (upon request)

The advantages of Murtfeldt steel C profiles

- Simple assembly/disassembly of the guide system
- Quick replacement procedure if wear occurs
- Plastic profiles only need to be secured against being pushed out once
- Simple alignment of the guide system
- No distortion occurs when mounting the steel C profile if screws are used
- Guide can increase/decrease in length if temperature variations occur

Single or varying chain/belt/cargo direction

When expansion takes place, the plastic guide moves up in the opposite direction to the running/conveying direction. You should therefore make sure that sufficient space for the anticipated expansion is provided at the start of the plastic guide.

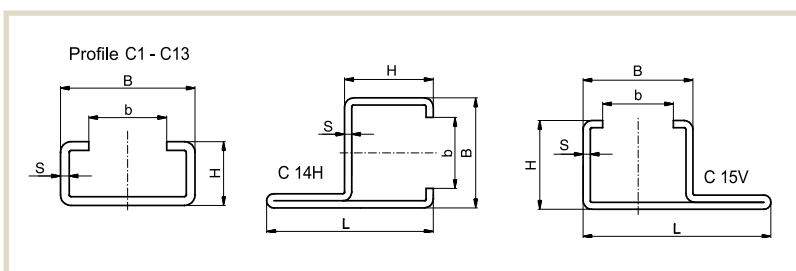


SELECTION TABLE

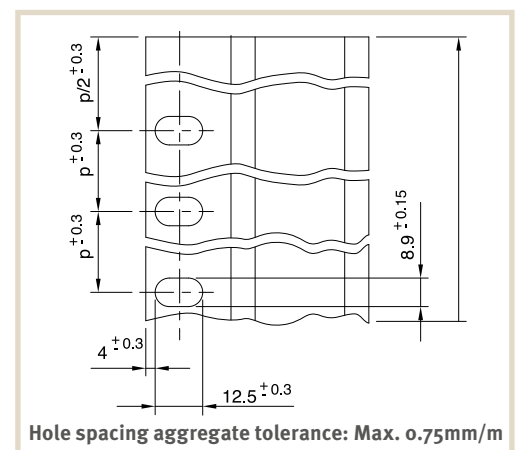
Galvanized, untreated or stainless steel C profiles

Profile No.	B	H	b	s	L	p	Steel C profile length	Art. no. for galvanized variant	Art. no. for V2A variant
C1	24	5.2	17.5	1	-	-	2000	351 020 001	351 020 101
							3048	351 120 001	351 120 101
							6000	351 060 001	351 060 101
C3	20	10	10	1.5	-	-	2000	351 020 003	351 020 103
							3048	351 120 003	351 120 103
							6000	351 060 003	351 060 103
C4	50	10	35	2	-	-	2000	351 020 004	351 020 104
							3048	351 120 004	351 120 104
							6000	351 060 004	351 060 104
C5	28	12	14	2	-	-	2000	351 020 005	351 020 105
							3048	351 120 005	351 120 105
							6000	351 060 005	351 060 105
C6	80	10	65	2	-	-	2000	351 020 006	351 020 106
							3048	351 120 006	351 120 106
							6000	351 060 006	351 060 106
C7	28	16	14	2.5	-	-	2000	351 020 007	351 020 107
							3048	351 120 007	351 120 107
							6000	351 060 007	351 060 107
C9	38	18	22	2.5	-	-	2000	351 020 009	351 020 109
							3048	351 120 009	351 120 109
							6000	351 060 009	351 060 109
C10	30	24	20	1.5	-	-	2000	351 020 010	351 020 110
							3048	351 120 010	351 120 110
							6000	351 060 010	351 060 110
C11	45	40	31	2	-	-	2000	351 020 011	351 020 111
							3048	351 120 011	351 120 111
							6000	351 060 011	351 060 111
C12	60	20	36	2.5	-	-	2000	351 020 012	351 020 112
							3048	351 120 012	351 120 112
							6000	351 060 012	351 060 112
C13	65	55	40	3	-	-	2000	351 020 013	351 020 113
							3048	351 120 013	351 120 113
							6000	351 060 013	351 060 113
C14 H	31	25	20	2	47	200	2000	351 020 014	351 020 114
						304,8	3048	351 120 014	351 120 114
						200	6000	351 060 014	351 060 114
C15 V	31	25	20	2	53	200	2000	351 020 015	351 020 115
						304,8	3048	351 120 015	351 120 115
						200	6000	351 060 015	351 060 115

Dimensions in mm



C 14H and C 15V steel profiles with punch hole in mounting rail



FASTENING OF STEEL C PROFILES

With T-head bolts

T-head bolts provide a secure connection between your machine element and our C profiles. As a rule, a simplex connection is used. Duplex connections are available if desired. Our application technology department will be glad to advise you to ensure that you obtain the best implementation for your requirements.

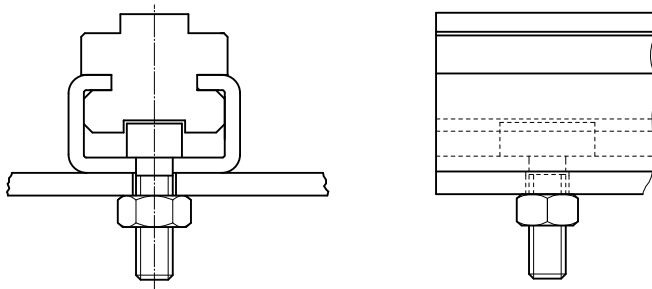
We can bore or punch individual hole patterns if you provide us with an appropriate drawing. For T-head bolt dimensions, see the following page.

■ Milled groove for bolt head prevents simultaneous turning of T-head bolt

■ Fastening of screw nuts from below (with T-head bolts)

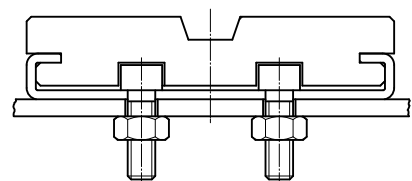
■ Punching and boring of required hole pattern in accordance with individual drawings

One-track fastening (standard)



Two-track fastening

(optional for wide C6 and C12 profiles)

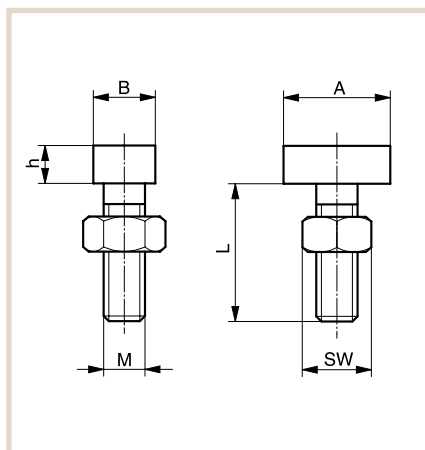


T-HEAD BOLTS

Galvanized/stainless steel

Thread (M x L)	Suitable for these steel C profiles	A in mm	B in mm	h in mm	Material	Article no.	Type
M6x20	C1, C3, C4, C5, C6, C7, C9, C10, C11, C12, C13	18.0	9.5	4	galvanized	352 010 001	-
M6x20	C1, C4, C5, C6, C7, C9, C12	15.5	9.0	6	galvanized	352 010 005	20/12
M6x30	C1, C4, C5, C6, C7, C9, C12	15.5	9.0	6	galvanized	352 010 003	20/12
M6x40	C1, C4, C5, C6, C7, C9, C12	15.5	9.0	6	galvanized	352 010 004	20/12
M8x20	C4, C6, C7, C9, C12	15.5	9.0	6	galvanized	352 010 008	20/12
M8x30	C4, C6, C7, C9, C12	15.5	9.0	6	galvanized	352 010 006	20/12
M8x40	C4, C6, C7, C9, C12	15.5	9.0	6	galvanized	352 010 007	20/12
M8x20	C4, C6, C7, C9, C12	23.0	11.0	6	galvanized	352 010 011	28/15
M8x30	C4, C6, C7, C9, C12	23.0	11.0	6	galvanized	352 010 019	28/15
M8x40	C4, C6, C7, C9, C12	23.0	11.0	6	galvanized	352 010 014	28/15
M10x20	C4, C6, C7, C9, C11, C12, C13	23.0	11.0	7	galvanized	352 010 020	28/15
M10x30	C4, C6, C7, C9, C11, C12, C13	23.0	11.0	7	galvanized	352 010 012	28/15
M10x40	C4, C6, C7, C9, C11, C12, C13	23.0	11.0	7	galvanized	352 010 013	28/15
M10x20	C6, C9, C12	31.0	13.5	9	galvanized	352 010 015	38/17
M10x30	C6, C9, C12	31.0	13.5	9	galvanized	352 010 016	38/17
M12x40	C6, C11, C12, C13	31.0	13.5	9	galvanized	352 010 017	38/17
M6x20	C1, C3, C4, C5, C6, C7, C9, C10, C11, C12, C13	18.0	9.5	4	stainless steel	352 010 002	-
M8x20	C4, C6, C7, C9, C12	15.5	9.0	6	stainless steel	352 010 025	20/12
M8x30	C4, C6, C7, C9, C12	15.5	9.0	6	stainless steel	352 010 026	20/12

Please speak with our application technology department to determine the best T-head screw for your needs. We can provide the appropriate models including nuts for one-track and two-track connections.



FIXING THE STEEL C-PROFILE WITH STUD WELDING BOLTS



■ Individual fixing of the welded bolt to your specification at any position on the steel-C-profile

■ Cost-effective process as no need for complex preparatory work

■ Available for galvanized and stainless steel profiles

■ Threaded bolts up to M8

■ Max. bolt length 40 mm

Thread size	Length	Material
M4	12	stainless steel
M5	8	stainless steel
M5	20	stainless steel
M5	20	steel
M6	25	stainless steel
M6	25	steel
M8	15	stainless steel
M8	15	steel
M8	20	stainless steel
M8	20	steel
M8	30	stainless steel
M8	30	steel

Other dimensions on request.



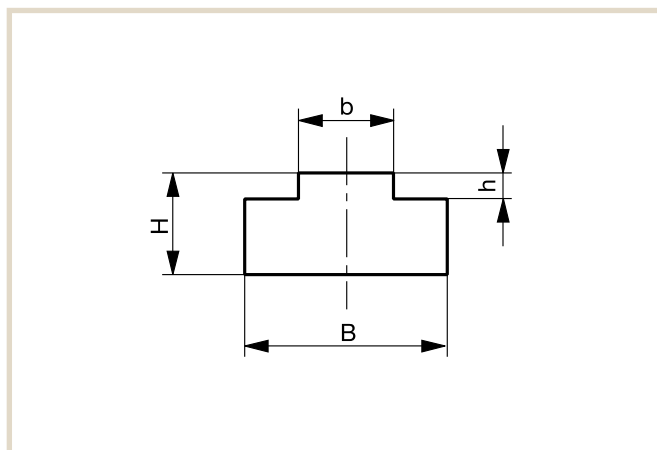
Chain Guides for Roller Chains as per DIN 8188

TYPE T



chain no.		Chain dimensions in inch	B	H	b	h	Article no. 2000 mm length	Article no. 3048 mm length
ASA/JIS	DIN 8188							
35	06C-1	3/8" x 3/16"	15.0	10.0	4.4	2.3	221 150 002	221 060 001
40	08A-1	1/2" x 5/16"	20.0	10.0	7.4	2.4	221 150 003	22 1060 002
50	10A-1	5/8" x 3/8"	20.0	10.0	8.8	2.8	221 150 004	221 060 003
60	12A-1	3/4" x 1/2"	30.0	15.0	11.8	3.5	221 150 005	221 060 004
80	16A-1	1" x 5/8"	40.0	15.0	14.8	4.7	221 150 006	221 060 005
100	20A-1	1 1/4" x 3/4"	45.0	20.0	17.8	6.4	221 150 007	221 060 006
120	24A-1	1 1/2" x 1"	55.0	20.0	23.7	8.0	221 150 008	221 060 007
140	28A-1	1 3/4" x 1"	60.0	25.0	23.7	9.7	221 150 009	221 060 008
160	32A-1	2" x 1 1/4"	70.0	25.0	29.7	11.3	221 150 010	221 060 009

Dimensions in mm

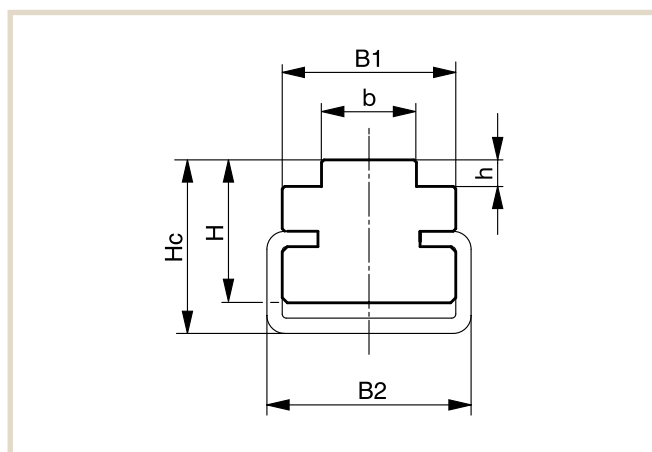


TYPE CT



chain no.		Chain dimensions in inch	C profile type	B1	B2	H	Hc	b	h	Article no.	
ASA/JIS	DIN 8188									2000 mm length	3048 mm length
35	06C-1	3/8" x 3/16"	C3	17	20	14	17	4.4	2.3	221 350 002 351 020 003	221 260 001 351 120 003
40	08A-1	1/2" x 5/16"	C3	17	20	14	17	7.4	2.4	221 350 003 351 020 003	221 260 002 351 120 003
50	10A-1	5/8" x 3/8"	C3	17	20	14	17	8.8	2.8	221 350 004 351 020 003	221 260 003 351 120 003
60	12A-1	3/4" x 1/2"	C5	24	28	14	20	11.8	3.5	221 350 005 351 020 005	221 260 004 351 120 005
80	16A-1	1" x 5/8"	C5	24	28	14	20	14.8	4.7	221 350 006 351 020 005	221 260 005 351 120 005
100	20A-1	1 1/4" x 3/4"	C5	24	28	18	23	17.8	6.4	221 350 007 351 020 005	221 260 006 351 120 005
120	24A-1	1 1/2" x 1"	C9	33	38	22	30	23.7	8	221 350 008 351 020 009	221 260 007 351 120 009
140	28A-1	1 3/4" x 1"	C9	33	38	25	32	23.7	9.7	221 350 009 351 020 009	221 260 008 351 120 009
160	32A-1	2" x 1 1/4"	C12	55	60	30	40	29.7	11.3	221 350 010 351 020 012	221 260 009 351 120 012

Dimensions in mm

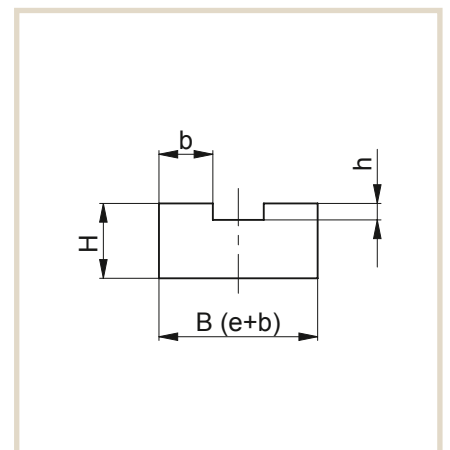
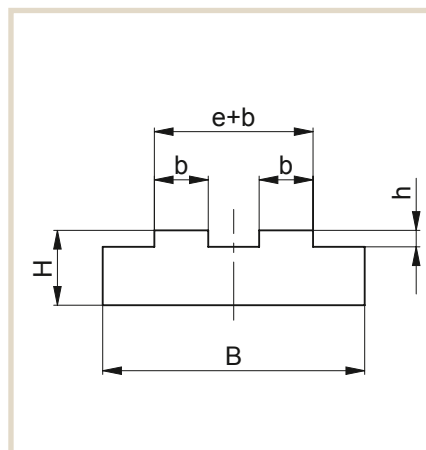


TYPE T-DUPLEX



Chain no.		Chain dimensions in inches	B	H	b	h	e+b	Article no. 2000 mm length	Article no. 3048 mm length
ASA/JIS	DIN 8188								
35-2	06C-2	3/8" × 3/16"	25	10	4.4	2.3	14.5	221 150 020	221 060 010
40-2	08A-2	1/2" × 5/16"	35	10	7.4	2.4	21.8	221 150 021	221 060 011
50-2	10A-2	5/8" × 3/8"	40	10	8.8	2.8	26.9	221 150 022	221 060 012
60-2	12A-2	3/4" × 1/2"	40	15	11.8	3.5	34.6	221 150 023	221 060 013
80-2	16A-2	1" × 5/8"	44	15	14.8	4.7	44	221 150 024	221 060 014
100-2	20A-2	1 1/4" × 3/4"	53	20	17.8	6.4	53	221 150 025	221 060 015
120-2	24A-2	1 1/2" × 1"	69	20	23.7	8	69	221 150 026	221 060 016
140-2	28A-2	1 3/4" × 1"	72	25	23.7	9.7	72	221 150 027	221 060 017
160-2	32A-2	2" × 1 1/4"	88	25	29.7	11.3	88	221 150 028	221 060 018

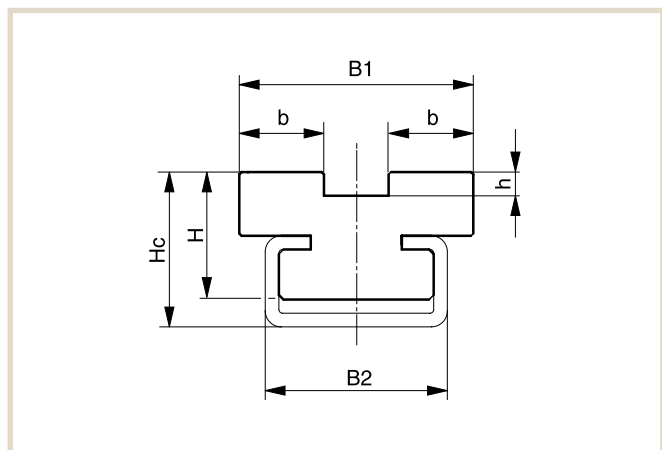
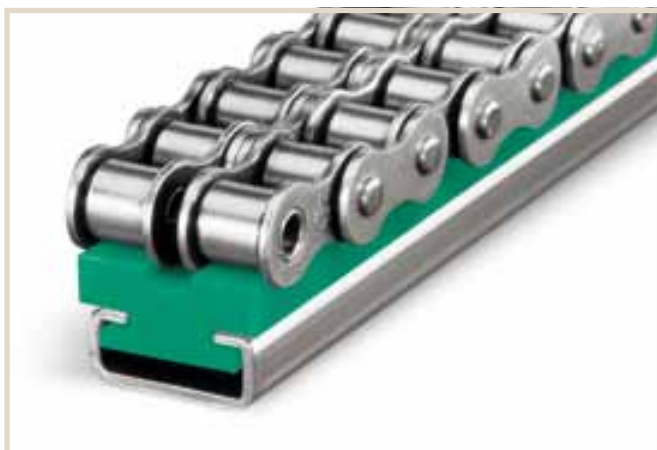
Dimensions in mm



TYPE CT-DUPLEX



chain no.		Chain dimensions in inch	C profile type	B1	B2	H	Hc	b	h	Article no.	
ASA/JIS	DIN 8188									2000 mm length	3048 mm length
35-2	06C-2	3/8" x 3/16"	C3	14.5	20	14	17	4.4	2.3	221 350 020 351 020 003	221 260 011 351 120 003
40-2	08A-2	1/2" x 5/16"	C3	21.8	20	14	17	7.4	2.4	221 350 021 351 020 003	221 260 012 351 120 003
50-2	10A-2	5/8" x 3/8"	C5	26.9	28	15	20	8.8	2.8	221 350 022 351 020 005	221 260 013 351 120 005
60-2	12A-2	3/4" x 1/2"	C5	34.6	28	18	22	11.8	3.5	221 350 023 351 020 005	221 260 014 351 120 005
80-2	16A-2	1" x 5/8"	C9	44	38	22	30	14.8	4.7	221 350 024 351 020 009	221 260 015 351 120 009
100-2	20A-2	1 1/4" x 3/4"	C12	53	60	22	30	17.8	6.4	221 350 025 351 020 012	221 260 016 351 120 012
120-2	24A-2	1 1/2" x 1"	C12	69	60	25	35	23.7	8	221 350 026 351 020 012	221 260 017 351 120 012
140-2	28A-2	1 3/4" x 1"	C12	72	60	30	40	23.7	9.7	221 350 027 351 020 012	221 260 018 351 120 012
160-2	32A-2	2" x 1 1/4"	C12	88	60	40	45	29.7	11.3	221 350 028 351 020 012	221 260 019 351 120 012

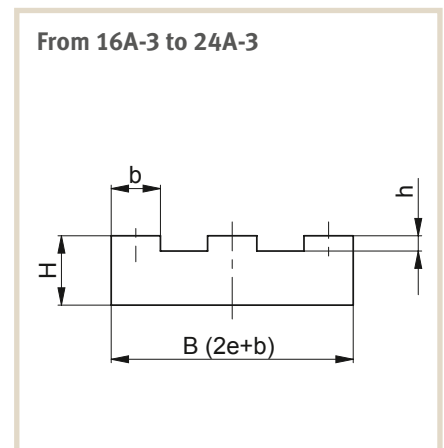
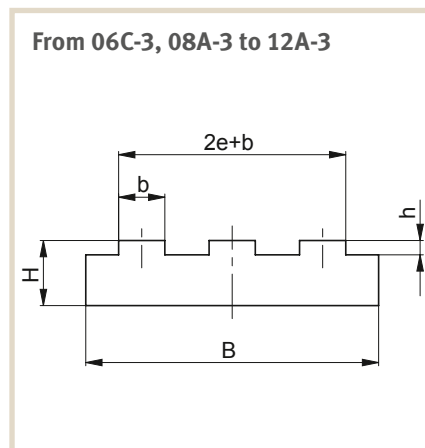


TYPE T-TRIPLEX



chain no.		Chain dimensions in inches	B	H	b	h	e+b	Article no. 2000 mm length	Article no. 3048 mm length
ASA/JIS	DIN 8188								
35-3	06C-3	3/8" x 3/16"	35	10	4.2	2.3	24.5	221 050 038	221 060 019
40-3	08A-3	1/2" x 5/16"	45	10	7.2	2.4	36	221 050 039	221 060 020
50-3	10A-3	5/8" x 3/8"	55	10	8.7	2.8	44.9	221 050 040	221 060 021
60-3	12A-3	3/4" x 1/2"	68	15	11.7	3.5	57.3	221 050 041	221 060 022
80-3	16A-3	1" x 5/8"	73.2	20	14.6	4.7	73.2	221 050 042	221 060 023
100-3	20A-3	1 1/4" x 3/4"	89.2	20	17.6	6.4	89.2	221 050 043	221 060 024
120-3	24A-3	1 1/2" x 1"	114.3	25	23.5	8	114.3	221 050 044	221 060 025

Dimensions in mm

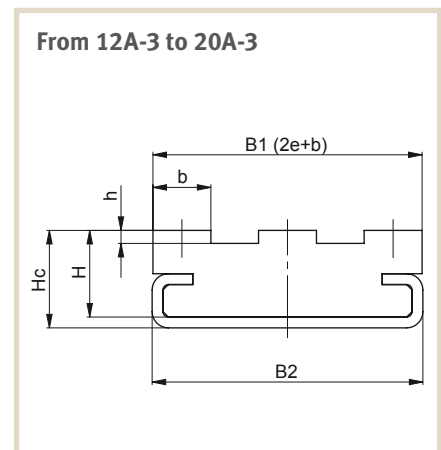
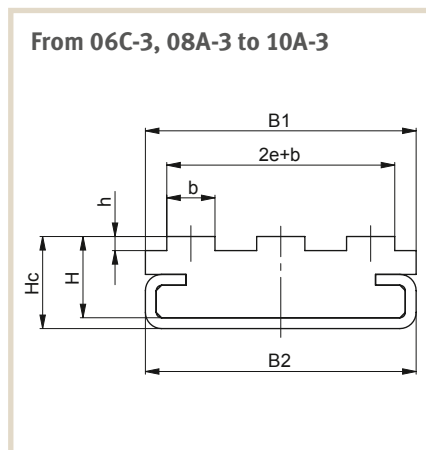


TYPE CT-TRIPLEX



chain no.		Chain dimensions in inch	C profile type	B1	B2	H	Hc	b	h	2e+b	Article no.	
ASA/JIS	DIN 8188										2000 mm length	3048 mm length
35-3	06C-3	3/8" x 3/16"	C5	30	28	15	20	4.2	2.3	24.5	221 250 023 351 020 005	221 260 020 351 120 005
40-3	08A-3	1/2" x 5/16"	C5	36	28	15	20	7.2	2.4	36	221 250 024 351 020 005	221 260 021 351 120 005
50-3	10A-3	5/8" x 3/8"	C4	50	50	15	17	8.7	2.8	44.9	221 250 025 351 020 004	221 260 022 351 120 004
60-3	12A-3	3/4" x 1/2"	C4	57.3	50	18	20	11.7	3.5	57.3	221 250 026 351 020 004	221 260 023 351 120 004
80-3	16A-3	1" x 5/8"	C6	73.2	80	20	22	14.6	4.7	73.2	221 250 027 351 020 006	221 260 024 351 120 006
100-3	20A-3	1 1/4" x 3/4"	C6	89.2	80	20	22	17.6	6.4	89.2	221 250 028 351 020 006	221 260 025 351 120 006

Dimensions in mm

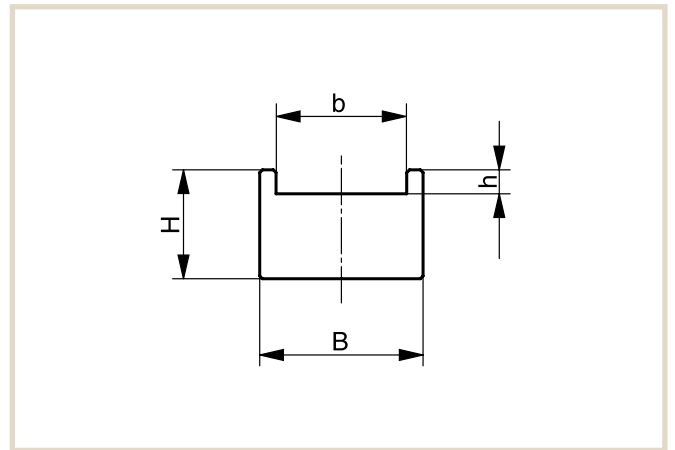


TYPE TU



chain no.		Chain dimensions in inches	B	H	b	h	Article no. 2000 mm length	Article no. 3048 mm length
ASA/JIS	DIN 8188							
25	04C-1	1/4" x 1/8"	18	10	13	2.5	221 150 001	221 160 001

Dimensions in mm

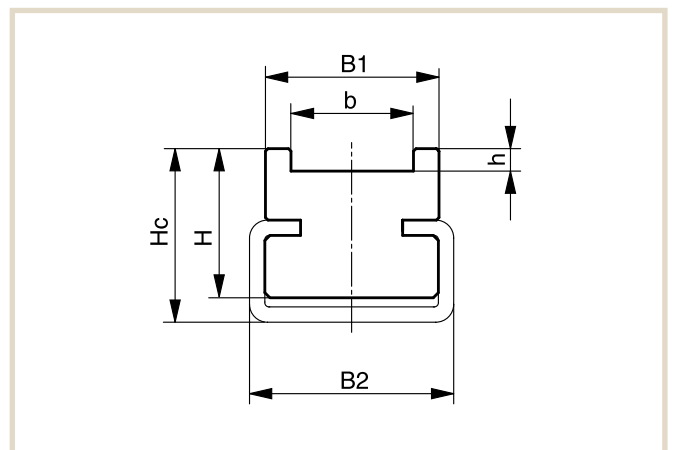


TYPE CTU



chain no.		Chain dim. in inches	C profile type	B1	B2	H	Hc	b	h	Article no. 2000 mm length	Article no. 3048 mm length
ASA/JIS	DIN 8188										
25	04C-1	1/4" x 1/8"	C3	18	20	12	16	13	2.5	221 350 001 351 020 003	221360001 351120003

Dimensions in mm

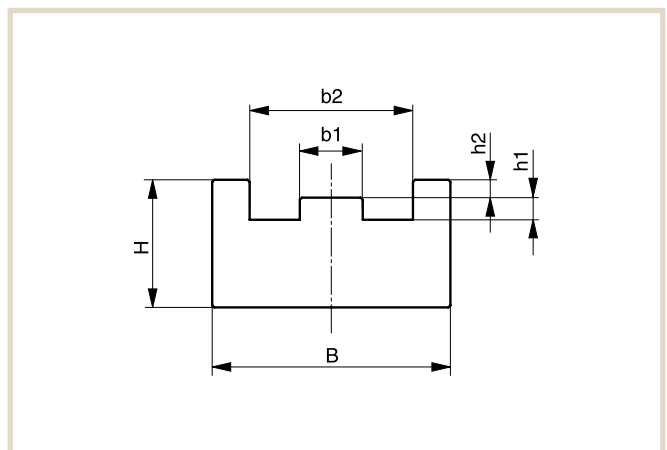


TYPE TS



chain no.		Chain dimensions in inches	B	H	b1	b2	h1	h2	Article no. 2000 mm length	Article no. 3048 mm length
ASA/JIS	DIN 8188									
35	06C-1	3/8" x 3/16"	20	10	3.7	11	2.3	0.7	221 150 011	221 160 002
40	08A-1	1/2" x 5/16"	25	10	6.3	15.5	2.4	1.8	221 150 012	221 160 003
50	10A-1	5/8" x 3/8"	30	15	7.5	19.5	2.8	2.3	221 150 013	221 160 004
60	12A-1	3/4" x 1/2"	35	15	10.1	24.4	3.5	2.7	221 150 014	221 160 005
80	16A-1	1" x 5/8"	40	20	12.6	31.3	4.7	3.6	221 150 015	221 160 006
100	20A-1	1 1/4" x 3/4"	50	25	15.1	38.4	6.4	4.3	221 150 016	221 160 007
120	24A-1	1 1/2" x 1"	60	30	20.2	48.6	8	5	221 150 017	221 160 008
140	28A-1	1 3/4" x 1"	70	30	20.2	52.5	9.7	5.7	221 150 018	221 160 009
160	32A-1	2" x 1 1/4"	80	35	25.2	62.5	10.3	6.4	221 150 019	221 160 010

Dimensions in mm

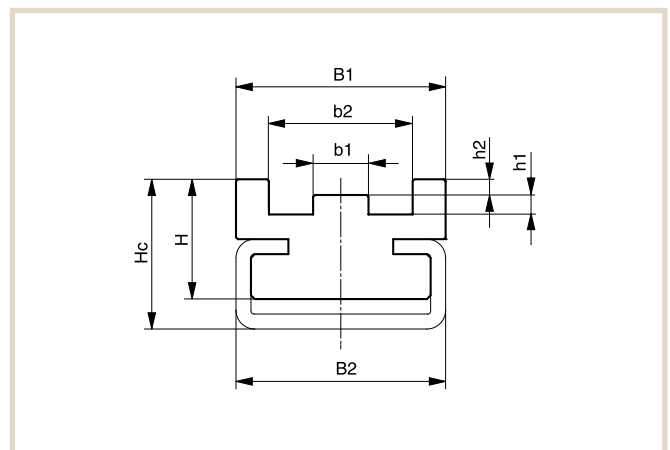


TYPE CTS



chain no.		Chain dimensions in inch	C profile type	B1	B2	H	Hc	b1	b2	h1	h2	Article no.	
ASA/JIS	DIN 8188											2000 mm length	3048 mm length
35	06C-1	3/8" x 3/16"	C3	20	20	14	17	3.7	11	2.3	0.7	221 350 011 351 020 003	221 360 011 351 120 003
40	08A-1	1/2" x 5/16"	C3	25	20	14	18	6.3	15.5	2.4	1.8	221 350 012 351 020 003	221 360 012 351 120 003
50	10A-1	5/8" x 3/8"	C5	30	28	18	22	7.5	19.5	2.8	2.3	221 350 013 351 020 005	221 360 013 351 120 005
60	12A-1	3/4" x 1/2"	C5	35	28	20	25	10.1	24.4	3.5	2.7	221 350 014 351 020 005	221 360 014 351 120 005
80	16A-1	1" x 5/8"	C9	40	38	25	32	12.6	31.3	4.7	3.6	221 350 015 351 020 009	221 360 015 351 120 009
100	20A-1	1 1/4" x 3/4"	C9	50	38	30	37	15.1	38.4	6.4	4.3	221 350 016 351 020 009	221 360 016 351 120 009
120	24A-1	1 1/2" x 1"	C12	60	60	35	40	20.2	48.6	8	5	221 350 017 351 020 012	221 360 017 351 120 012
140	28A-1	1 3/4" x 1"	C12	70	60	35	43	20.2	52.5	9.7	5.7	221 350 018 351 020 012	221 360 018 351 120 012
160	32A-1	2" x 1 1/4"	C12	80	60	40	47	25.2	62.5	10.3	6.4	221 350 019 351 020 012	221 360 019 351 120 012

Dimensions in mm

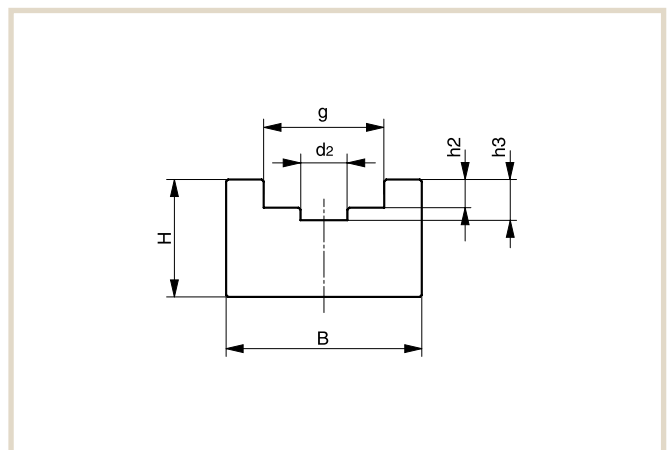


TYPE U



chain no.		Chain dimensions in inches	B	H	b1	b2	h1	h2	Article no.	Article no.
ASA/JIS	DIN 8188								2000 mm length	3048 mm length
25	04C-1	1/4" x 1/8"	15	10	2.9	6.6	1.7	3.1	221 150 029	221 160 011
35	06C-1	3/8" x 3/16"	20	15	4.5	10	2.7	4.5	221 150 030	221 160 012
40	08A-1	1/2" x 5/16"	20	15	5	13.2	3.1	5.2	221 150 031	221 160 013
50	10A-1	5/8" x 3/8"	25	15	6.4	16.5	4.2	6.5	221 150 032	221 160 014
60	12A-1	3/4" x 1/2"	30	20	7.4	19.8	5	7.5	221 150 033	221 160 015
80	16A-1	1" x 5/8"	35	20	9.9	26.5	6.3	9.3	221 150 034	221 160 016
100	20A-1	1 1/4" x 3/4"	40	25	11.9	33.1	8.3	11.7	221 150 035	221 160 017
120	24A-1	1 1/2" x 1"	55	25	13.9	39.8	9.8	13.4	221 150 036	221 160 018
140	28A-1	1 3/4" x 1"	60	30	15.9	46.4	11.5	15.6	221 150 037	221 160 019
160	32A-1	2" x 1 1/4"	65	35	17.8	53	13.5	17.8	221 150 038	221 160 020

Dimensions in mm

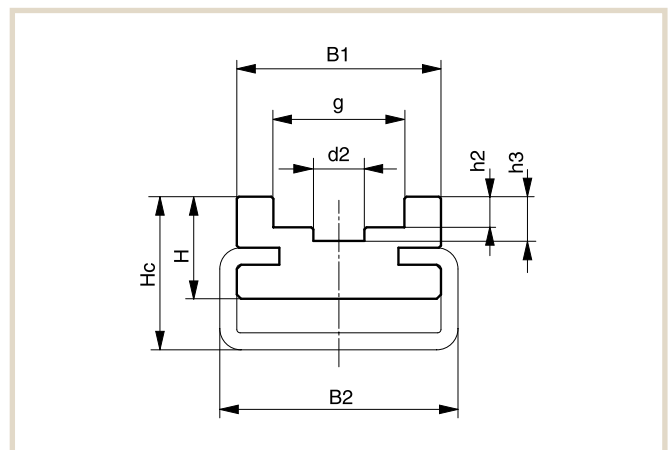


TYPE CU



chain no.		Chain dimensions in inch	C profile type	B1	B2	H	Hc	d2	g	h2	h3	Article no.	
ASA/JIS	DIN 8188											2000 mm length	3048 mm length
25	04C-1	1/4" x 1/8"	C3	17	20	12	15	2.9	6.6	1.7	3.1	221 350 029 351 020 003	221 360 021 351 120 003
35	06C-1	3/8" x 3/16"	C3	20	20	14	18	4.5	10	2.7	4.5	221 350 030 351 020 003	221 360 022 351 120 003
40	08A-1	1/2" x 5/16"	C3	20	20	14	18	5	13.2	3.1	5.2	221 350 031 351 020 003	221 360 023 351 120 003
50	10A-1	5/8" x 3/8"	C3	25	20	16	20	6.4	16.5	4.2	6.5	221 350 032 351 020 003	221 360 024 351 120 003
60	12A-1	3/4" x 1/2"	C5	30	28	18	22	7.4	19.8	5	7.5	221 350 033 351 020 005	221 360 025 351 120 005
80	16A-1	1" x 5/8"	C5	35	28	20	25	9.9	26.5	6.3	9.3	221 350 034 351 020 005	221 360 026 351 120 005
100	20A-1	1 1/4" x 3/4"	C9	40	38	27	35	11.9	33.1	8.3	11.7	221 350 035 351 020 009	221 360 027 351 120 009
120	24A-1	1 1/2" x 1"	C9	55	38	30	37	13.9	39.8	9.8	13.4	221 350 036 351 020 009	221 360 028 351 120 009
140	28A-1	1 3/4" x 1"	C12	60	60	30	40	15.9	46.4	11.5	15.6	221 350 037 351 020 012	221 360 029 351 120 012
160	32A-1	2" x 1 1/4"	C12	65	60	35	42	17.8	53	13.5	17.8	221 350 038 351 020 012	221 360 030 351 120 012

Dimensions in mm

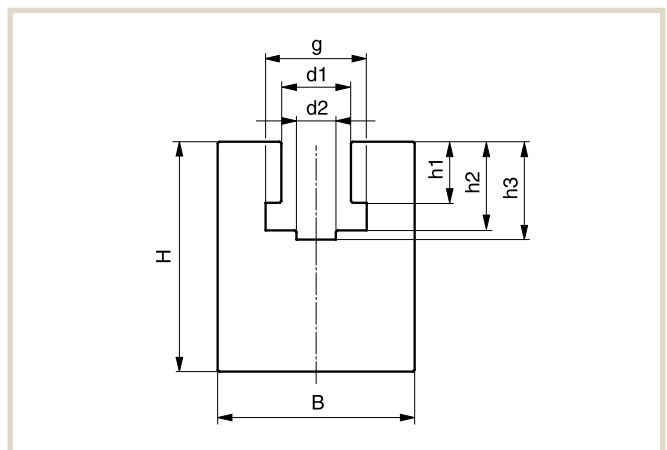


TYPE K



chain no.		Chain dim. in inches	B	H	d1	d2	g	h1	h2	h3	Article no. 2000 mm length	Article no. 3048 mm length
ASA/JIS	DIN 8188											
35	06C-1	3/8" x 3/16"	20	25	5.3	4.5	10	4.4	7.8	9.3	221 150 039	221 160 021
40	08A-1	1/2" x 5/16"	25	30	8.3	5	13.2	7.4	11.7	13.4	221 150 040	221 160 022
50	10A-1	5/8" x 3/8"	30	35	10.7	6.4	16.5	8.8	14.5	16.2	221 150 041	221 160 023
60	12A-1	3/4" x 1/2"	35	40	12.5	7.4	19.8	11.8	18.5	20.5	221 150 042	221 160 024
80	16A-1	1" x 5/8"	40	45	16.7	9.9	26.5	14.8	23.5	25.6	221 150 043	221 160 025
100	20A-1	1 1/4" x 3/4"	50	50	20	11.9	33.1	17.8	28.7	31.2	221 150 044	221 160 026
120	24A-1	1 1/2" x 1"	60	60	23.3	13.9	39.8	23.7	36.9	39.6	221 150 045	221 160 027
140	28A-1	1 3/4" x 1"	65	60	26.7	15.9	46.4	23.7	38.9	41.7	221 150 046	221 160 028
160	32A-1	2" x 1 1/4"	75	70	30	17.8	53	29.7	47	50.5	221 150 047	221 160 029

Dimensions in mm

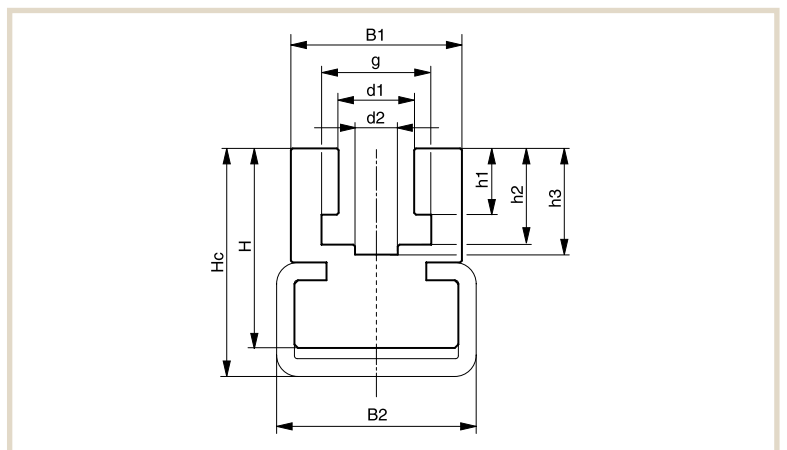


TYPE CK



chain no.		Chain dimensions in inch	C profile type	B1	B2	H	Hc	d1	d2	g	h1	h2	h3	Article no. 2000 mm length	Article no. 3048 mm length
ASA/JIS	DIN 8188														
35	06C-1	3/8" x 3/16"	C3	20	20	22	25	5.3	4.5	10	4.4	7.8	9.3	221 350 039 351 020 003	221 360 031 351 120 003
40	08A-1	1/2" x 5/16"	C3	25	20	27	30	8.3	4.5	13.2	7.4	11.7	13.4	221 350 040 351 020 003	221 360 032 351 120 003
50	10A-1	5/8" x 3/8"	C5	30	28	30	35	10.7	6.4	16.5	8.8	14.5	16.2	221 350 041 351 020 005	221 360 033 351 120 005
60	12A-1	3/4" x 1/2"	C5	35	28	35	40	12.5	7.4	19.8	11.8	18.5	20.5	221 350 042 351 020 005	221 360 034 351 120 005
80	16A-1	1" x 5/8"	C9	40	38	45	50	16.7	9.9	26.5	14.8	23.5	25.6	221 350 043 351 020 009	221 360 035 351 120 009
100	20A-1	1 1/4" x 3/4"	C9	50	38	50	57	20	11.9	33.1	17.8	28.7	31.2	221 350 044 351 020 009	221 360 036 351 120 009
120	24A-1	1 1/2" x 1"	C12	60	60	60	65	23.3	13.9	39.8	23.7	36.9	39.6	221 350 045 351 020 012	221 360 037 351 120 012
140	28A-1	1 3/4" x 1"	C12	65	60	65	70	26.7	15.9	46.4	23.7	38.9	41.7	221 350 046 351 020 012	221 360 038 351 120 012
160	32A-1	2" x 1 1/4"	C12	75	60	75	80	30	17.8	53	29.7	47	50.5	221 350 047 351 020 012	221 360 039 351 120 012

Dimensions in mm

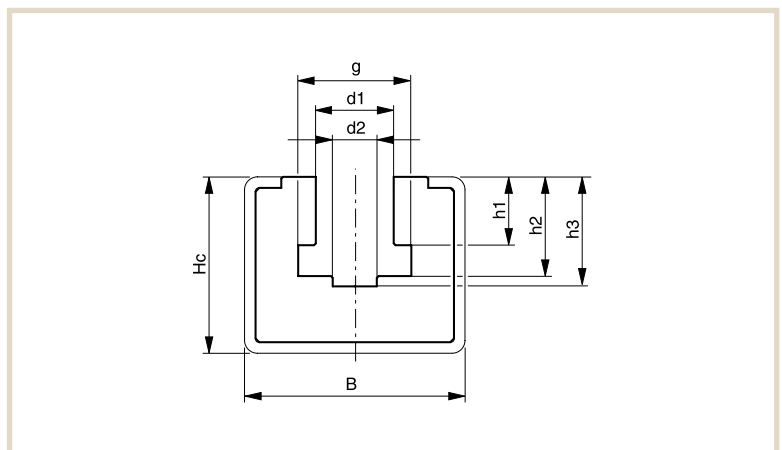


TYPE CKG



chain no.		Chain dimensions in inch	C profile type	B	Hc	d1	d2	g	h1	h2	h3	Article no.	
ASA/JIS	DIN 8188											2000 mm length	3048 mm length
35	06C-1	3/8" x 3/16"	C10	30	24	5.3	4.5	10	4.4	7.8	9.3	221 450 001 351 020 010	221 460 001 351 120 010
40	08A-1	1/2" x 5/16"	C10	30	24	8.3	5	13.2	7.4	11.7	13.4	221 450 002 351 020 010	221 460 002 351 120 010
50	10A-1	5/8" x 3/8"	C10	30	24	10.7	6.4	16.5	8.8	14.5	16.2	221 450 003 351 020 010	221 460 003 351 120 010
60	12A-1	3/4" x 1/2"	C10	30	24	12.5	7.4	19.8	11.8	18.5	20.5	221 450 004 351 020 010	221 460 004 351 120 010
80	16A-1	1" x 5/8"	C11	45	40	16.7	9.9	26.5	14.8	23.5	25.6	221 450 005 351 020 011	221 460 005 351 120 011
100	20A-1	1 1/4" x 3/4"	C13	65	55	20	11.9	33	17.8	28.7	31.2	221 450 006 351 020 013	221 460 006 351 120 013
120	24A-1	1 1/2" x 1"	C13	65	55	23.3	13.9	39.8	23.7	36.9	39.6	221 450 007 351 020 013	221 460 007 351 120 013
140	28A-1	1 3/4" x 1"	C13	65	60	26.7	15.9	46.4	23.7	38.9	41.7	221 450 008 351 020 013	221 460 008 351 120 013

Dimensions in mm

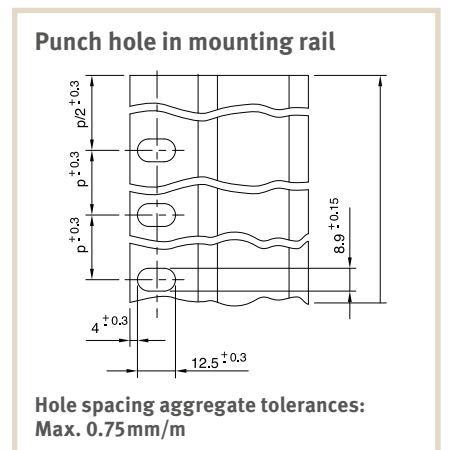
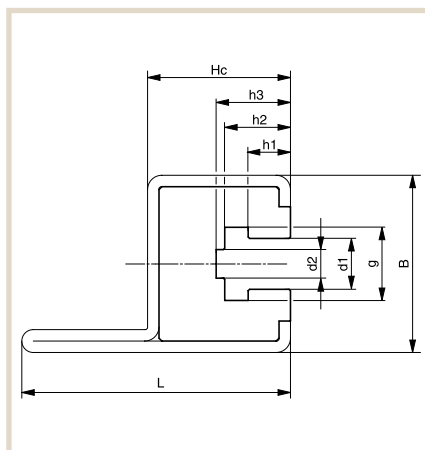


TYPE CKG 14 H



chain no.		Chain dimensions in inch	C profile type	B	Hc	L	d1	d2	g	h1	h2	h3	Article no.	
ASA/JIS	DIN 8188												2000 mm length	3048 mm length
35	06C-1	3/8" x 3/16"	C14H	31	25	47	5.3	4.5	10	4.4	7.8	9.3	221 450 001 351 020 014	221 460 001 351 120 014
40	08A-1	1/2" x 5/16"	C14H	31	25	47	8.3	5	13.2	7.4	11.7	13.4	221 450 002 351 020 014	221 460 002 351 120 014
50	10A-1	5/8" x 3/8"	C14H	31	25	47	10.7	6.4	16.5	8.8	14.5	16.2	221 450 003 351 020 014	221 460 003 351 120 014
60	12A-1	3/4" x 1/2"	C14H	31	25	47	12.5	7.4	19.8	11.8	18.5	20.5	221 450 004 351 020 014	221 460 004 351 120 014

Dimensions in mm

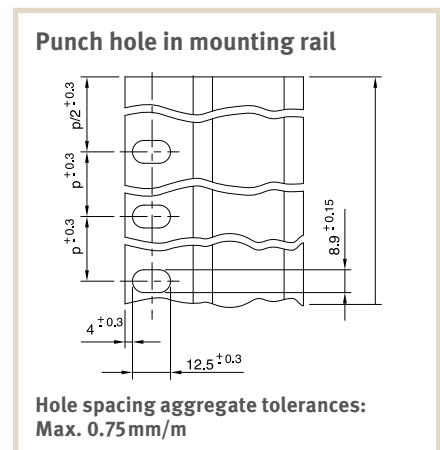
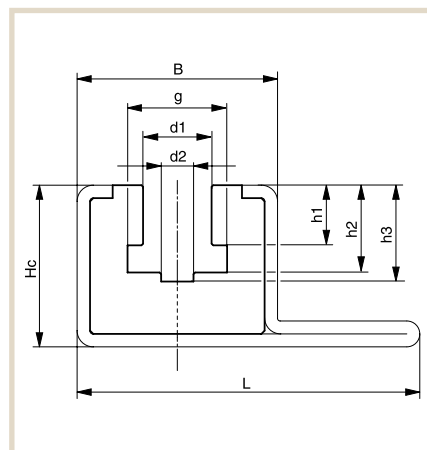


TYPE CKG 15 V



chain no.		Chain dimensions in inch	C profile type	B	Hc	L	d1	d2	g	h1	h2	h3	Article no.	
ASA/JIS	DIN 8188												2000 mm length	3048 mm length
35	06C-1	3/8" x 3/16"	C15V	31	25	53	5.3	4.5	10	4.4	7.8	9.3	221 450 001 351 020 015	221 460 001 351 120 015
40	08A-1	1/2" x 5/16"	C15V	31	25	53	8.3	5	13.2	7.4	11.7	13.4	221 450 002 351 020 015	221 460 002 351 120 015
50	10A-1	5/8" x 3/8"	C15V	31	25	53	10.7	6.4	16.5	8.8	14.5	16.2	221 450 003 351 020 015	221 460 003 351 120 015
60	12A-1	3/4" x 1/2"	C15V	31	25	53	12.5	7.4	19.8	11.8	18.5	20.5	221 450 004 351 020 015	221 460 004 351 120 015

Dimensions in mm



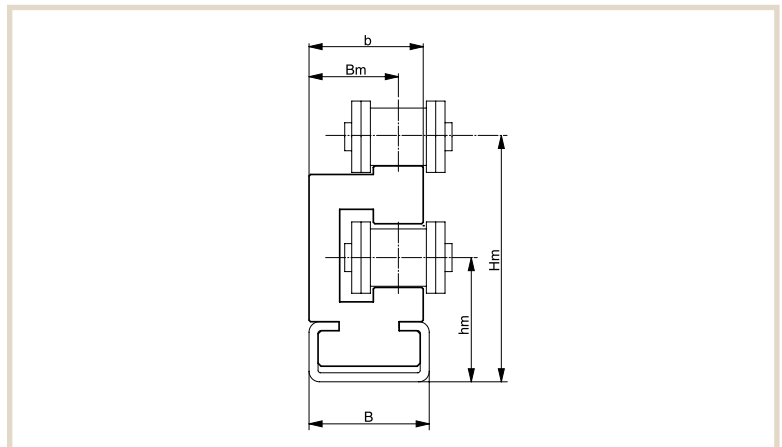
Double-Decker Guides for Roller Chains as per DIN 8188

TYPE ETA



chain no.		Chain dimensions in inch	C profile type	B	Hm	b	Bm	hm	Article no.	
ASA/JIS	DIN 8188								2000 mm length	3048 mm length
35	06C-1	3/8" x 3/16"	C3	20	32.7	17	15	18.7	221 350 048 351 020 003	221 360 040 351 120 003
40	08A-1	1/2" x 5/16"	C3	20	39.2	20	16.4	20.3	221 350 049 351 020 003	221 360 041 351 120 003
50	10A-1	5/8" x 3/8"	C5	28	46.4	24	19.7	24.3	221 350 050 351 020 005	221 360 042 351 120 005
60	12A-1	3/4" x 1/2"	C5	28	56.3	30	24.2	29.2	221 350 051 351 020 005	221 360 043 351 120 005
80	16A-1	1" x 5/8"	C9	38	76.4	38	30.7	40.3	221 350 052 351 020 009	221 360 044 351 120 009

Dimensions in mm



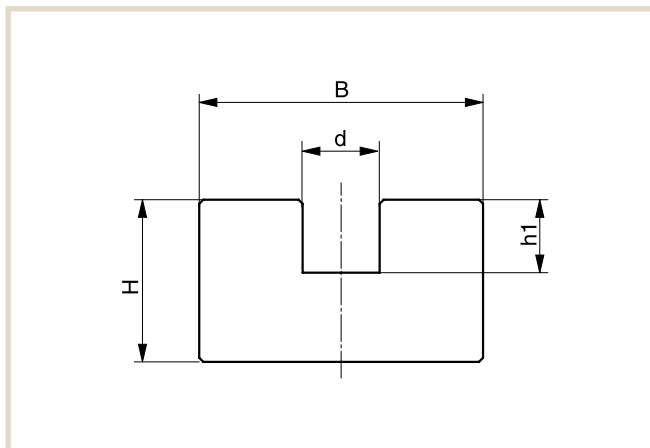
Chain guides for round link chains as per DIN 766/764

TYPE R



Nominal thickness DIN 766/764	B	H	d	h1	Article no. 2000 mm length	Article no. 3048 mm length
6	30	15	7	7	231 010 001	231 060 001
8	38	20	9	9	231 010 002	231 060 002
10	45	25	11.5	11	231 010 003	231 060 003
13	55	30	15	15	231 010 004	231 060 004

Dimensions in mm

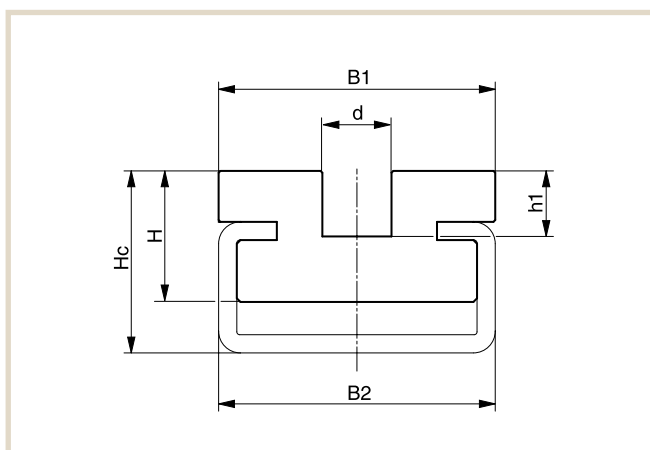


TYPE CRU



Nominal thickness DIN 766/764	C Profile type	B1	B2	H	Hc	d	h1	Article no. 2000 mm length	Article no. 3048 mm length
6	C5	30	28	14	18	7	7	231 100 005	231 160 028
			351 020 005					351 120 005	
8	C9	38	38	18	25	9.5	9	231 100 006	231 160 029
			351 020 009					351 120 009	
10	C9	45	38	18	28	11.5	11	231 100 007	231 160 030
			351 020 009					351 120 009	
13	C12	60	60	25	33	15	15	231 100 008	231 160 031
			351 020 012					351 120 012	

Dimensions in mm For round link chains that do not comply with DIN 766 or DIN 764 please specify dimensions.

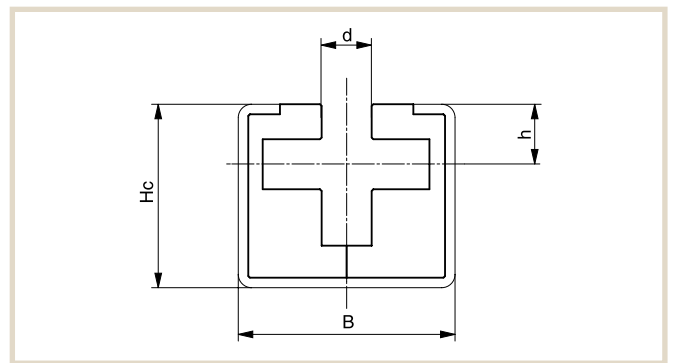


TYPE CRG



Nominal thickness DIN 766/764	C Profile type	B	Hc	d	h	Article no. 2000 mm length	Article no. 3048 mm length
6	C11	45	40	7.0	8.0	231 100 009	231 160 001
						351 020 011	351 120 011
8	C11	45	40	9.5	9.5	231 100 010	231 160 002
						351 020 011	351 120 011
10	C13	65	55	11.5	14.0	231 100 011	231 160 003
						351 020 013	351 120 013
13	C13	65	55	15.0	18.0	231 100 012	231 160 004
						351 020 013	351 120 013

Dimensions in mm

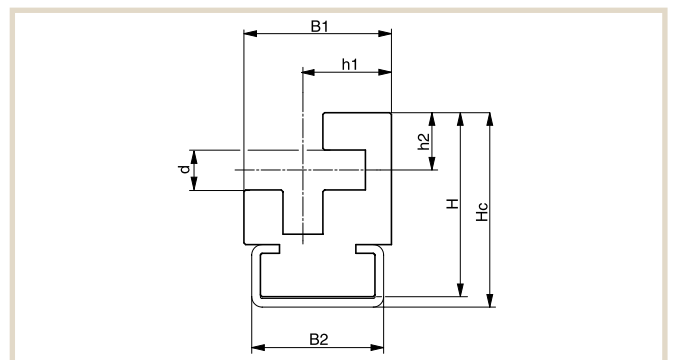


TYPE CRO



Nominal thickness DIN 766/764	C Profile type	B1	B2	H	Hc	d	h1	h2	Article no. 2000 mm length	Article no. 3048 mm length
6	C3	27.0	20	32	34	7.0	17.5	10.5	231 100 001	231 160 005
									351 020 003	351 120 003
8	C5	32.0	28	39	42	9.5	20.5	12.5	231 100 002	231 160 006
									351 020 005	351 120 005
10	C9	42.5	38	53	56	11.5	25.5	16.5	231 100 002	231 160 007
									351 020 009	351 120 009
13	C12	60.0	60	67	70	15.0	33.5	20.5	231 100 004	231 160 008
									351 020 012	351 120 012

Dimensions in mm For round link chains that do not comply with DIN 766 or DIN 764 please specify dimensions.



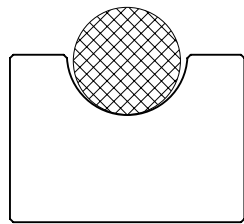
OVERVIEW OF BELT GUIDES

Plastic instead of metal

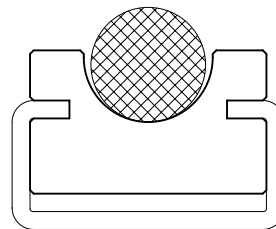
Belt guides made of metal cause a great deal of friction on the belts. By choosing a belt guide made of Material "S"[®] Black Antistatic, you considerably reduce this wear. In addition, you

save on drive energy thanks to the reduced static friction. Material "S"[®] Black Antistatic is suitable for use for round belts, V-belts, tooth belts and tracked tooth belts.

For round belts

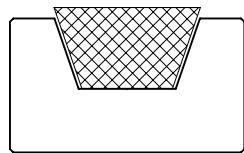


Type RR – page 33

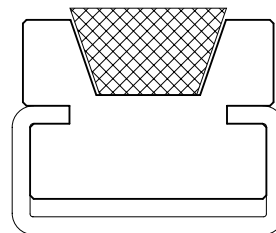


Type RRC – page 33

For V-belts as per DIN 2215

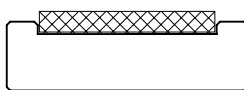


Type KR – page 34

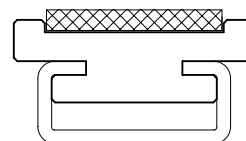


Type KRC – page 35

For tooth belts

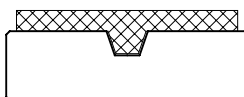


Type FR – page 36

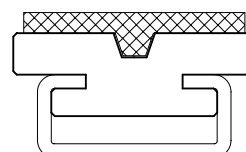


Type FRC – page 36

For tracked tooth belts



Type FK – page 37



Type FKC – page 37

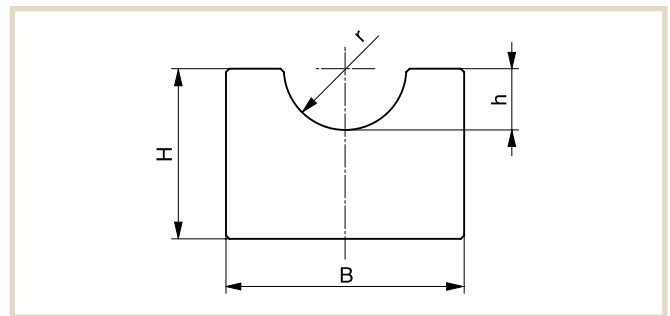
Guides for Round Belts

TYPE RR



Belt type/∅	B	H	h	r	Article no. 2000 mm length	Article no. 3048 mm length
5.0	20	10	3	3	231 010 027	231 060 027
6.3	20	10	4	4	231 010 028	231 060 014
8.0	20	12	5	5	231 010 029	231 060 015
9.5	25	15	6	6	231 010 030	231 060 016
12.5	28	20	8	7	231 010 031	231 060 017
15.0	33	25	10	9	231 010 032	231 060 018
18.0	38	25	12	10	231 010 033	231 060 019

Dimensions in mm

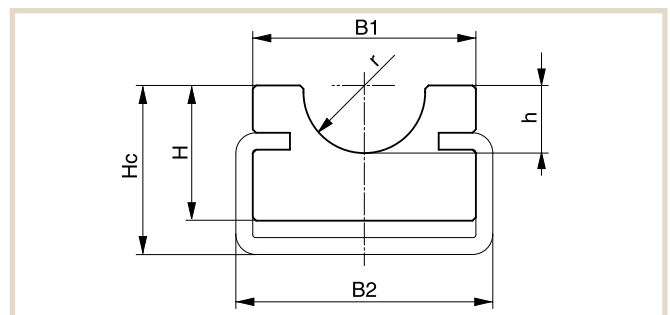


TYPE RRC



Belt type/∅	C profile type	B1	B2	H	Hc	h	r	Article no. 2000 mm length	Article no. 3048 mm length
5.0	C3	20	20	10	15	3	3	231 110 035	231 160 032
								351 020 003	351 120 003
6.3	C3	20	20	15	18	4	4	231 110 036	231 160 015
								351 020 003	351 120 003
8.0	C3	20	20	15	18	5	5	231 110 037	231 160 016
								351 020 003	351 120 003
9.5	C5	25	28	15	20	6	6	231 110 038	231 160 017
								351 020 005	351 120 005
12.5	C5	28	28	15	20	8	7	231 110 039	231 160 018
								351 020 005	351 120 005
15.0	C9	33	38	20	25	10	9	231 110 040	231 160 019
								351 020 009	351 120 009
18.0	C9	38	38	20	25	12	10	231 110 041	231 160 020
								351 020 009	351 120 009

Dimensions in mm



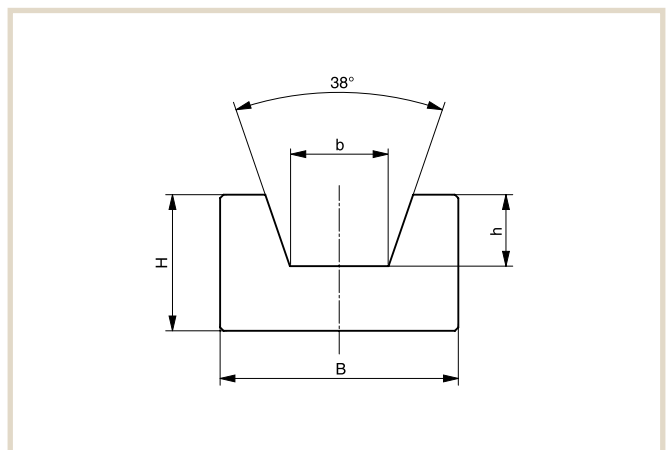
Guides for V-belts as per DIN 2215

TYPE KR



Belt type/b x h	B	H	b	h	Article no. 2000 mm length	Article no. 3048 mm length
8 x 5	20	10	6.0	3.5	231 010 005	231 060 028
10 x 6	20	10	7.2	4.5	231 010 006	231 060 009
13 x 8	20	12	9.2	6.0	231 010 007	231 060 010
17 x 11	30	15	11.5	8.0	231 010 008	231 060 011
20 x 12.5	30	20	13.5	9.0	231 010 009	231 060 029
22 x 14	35	20	14.5	10.5	231 010 010	231 060 012
25 x 16	40	25	16.5	12.0	231 010 011	231 060 030
32 x 20	50	30	21.0	16.0	231 010 012	231 060 013
40 x 25	60	35	26.0	21.0	231 010 013	231 060 031

Dimensions in mm

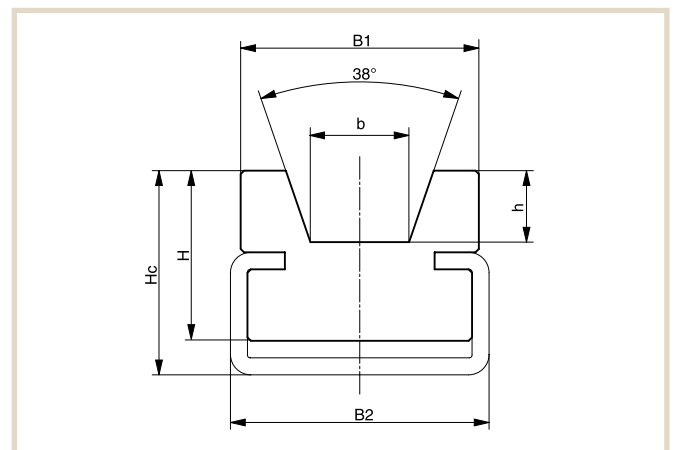


TYPE KRC



Belt type/b x h	C profile type	B1	B2	H	Hc	b	h	Article no. 2000 mm length	Article no. 3048 mm length
8 x 5	C3	20	20	10	15	6.0	3.5	231 110 013	231 160 033
			20					351 020 003	351 120 003
10 x 6	C3	20	20	15	18	7.2	4.5	231 110 014	231 160 010
			20					351 020 003	351 120 003
13 x 8	C5	25	28	18	22	9.2	6.0	231 110 015	231 160 011
			28					351 020 005	351 120 005
17 x 11	C5	30	28	18	24	11.5	8.0	231 110 016	231 160 012
			28					351 020 005	351 120 005
20 x 12.5	C5	30	28	18	24	13.5	9.0	231 110 017	231 160 034
			28					351 020 005	351 120 005
22 x 14	C9	35	38	25	30	14.5	10.5	231 110 018	231 160 013
			38					351 020 009	351 120 009
25 x 16	C9	40	38	25	32	16.5	12.0	231 110 019	231 160 035
			38					351 020 009	351 120 009
32 x 20	C12	60	60	35	40	21.0	16.0	231 110 020	231 160 014
			60					351 020 012	351 120 012
40 x 25	C12	60	60	35	40	26.0	21.0	231 110 021	231 160 036
			60					351 020 012	351 120 012

Dimensions in mm



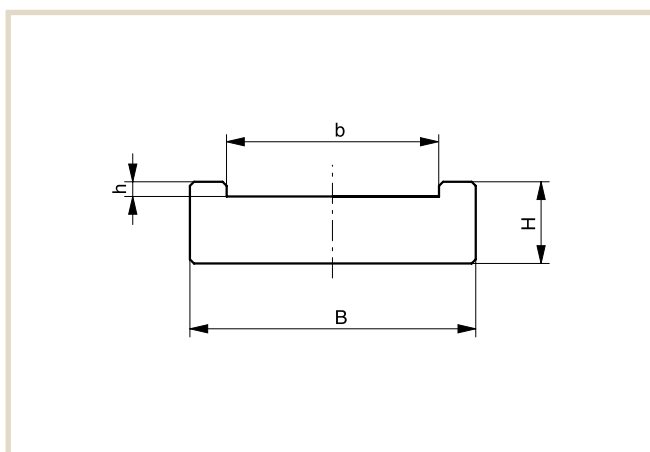
Guides for tooth belts

TYPE FR



Belt type	B	H	b	h	Article no. 2000 mm length	Article no. 3048 mm length
25/T5	35	10	26	1.8	231 010 014	231 060 040
32/T5	45	12	33	1.8	231 010 015	231 060 041
25/T10	35	12	26	3.8	231 010 016	231 060 042
32/T10	45	12	33	3.8	231 010 017	231 060 043
50/T10	65	15	51	3.8	231 010 018	231 060 044
75/T10	90	15	76	3.8	231 010 019	231 060 045
100/T10	115	18	101	3.8	231 010 020	231 060 046

Dimensions in mm

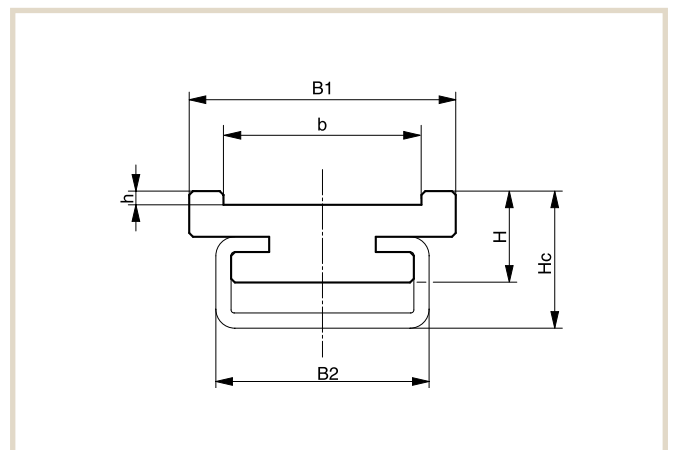


TYPE FRC



Belt type	C profile type	B1	B2	H	Hc	b	h	Article no. 2000 mm length	Article no. 3048 mm length
25/T5	C5	35	28	12	18	26	1.8	231 110 022	231 160 040
			28					351 020 005	351 120 005
32/T5	C5	45	28	12	18	33	1.8	231 110 023	231 160 041
			28					351 020 005	351 120 005
25/T10	C5	35	28	15	20	26	3.8	231 110 024	231 160 042
			28					351 020 005	351 120 005
32/T10	C5	45	28	15	20	33	3.8	231 110 025	231 160 043
			28					351 020 005	351 120 005
50/T10	C4	65	50	18	20	51	3.8	231 110 026	231 160 044
			50					351 020 004	351 120 004
75/T10	C6	90	80	18	20	76	3.8	231 110 027	231 160 045
			80					351 020 006	351 120 006
100/T10	C6	115	80	18	20	101	3.8	231 110 028	231 160 046
			80					351 020 006	351 120 006

Dimensions in mm



Guides for tracked tooth belts

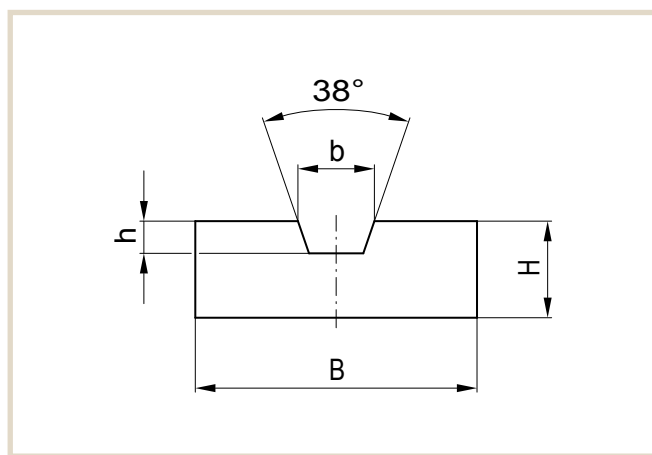
TYPE FK



Belt type	B	H	b	h	Article no. 2000 mm length	Article no. 3048 mm length
25/TK5	28	10	6.0	3.5	231 010 021	231 060 050
32/TK5	35	10	6.0	3.5	231 010 022	231 060 051
32/TK10*	35	12	9.5	4.0	231 010 023	231 060 052
50/TK10*	55	12	9.5	4.0	231 010 024	231 060 053
75/TK10	80	15	13.0	5.0	231 010 025	231 060 054
100/TK 10	105	15	13.0	5.0	231 010 026	231 060 055

Dimensions in mm

* Standard for V-profile 10 x 6; specify any deviations!



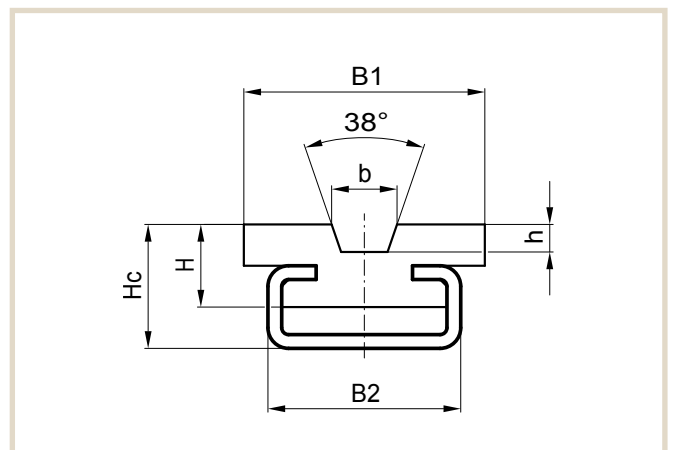
TYPE FKC



Belt type	C profile type	B1	B2	H	Hc	b	h	Article no. 2000 mm length	Article no. 3048 mm length
25/TK 5	C5	28	28	12	18	6.0	3.5	231 110 029	231 160 050
								351 020 005	351 120 005
32/TK 5	C5	35	28	12	18	6.0	3.5	231 110 030	231 160 051
								351 020 005	351 120 005
32/TK10*	C5	35	28	12	18	9.5	4.0	231 110 031	231 160 052
								351 020 005	351 120 005
50/TK10*	C4	55	50	15	18	9.5	4.0	231 110 032	231 160 053
								351 020 004	351 120 004
75/TK10	C6	80	80	15	18	13.0	5.0	231 110 033	231 160 054
								351 020 006	351 120 006
100/TK10	C6	105	80	15	18	13.0	5.0	231 110 034	231 160 055
								351 020 006	351 120 006

Dimensions in mm

* Standard for V-profile 10 x 6; specify any deviations!



CHAIN RACKS

Good value, flexible, and robust

Our chain racks have more than proven themselves as an economical alternative to milled racks. The system is characterized by ease of installation and simple adjustment, and is attached using an anchor plate at one end and a clamping set at the other end.

Design

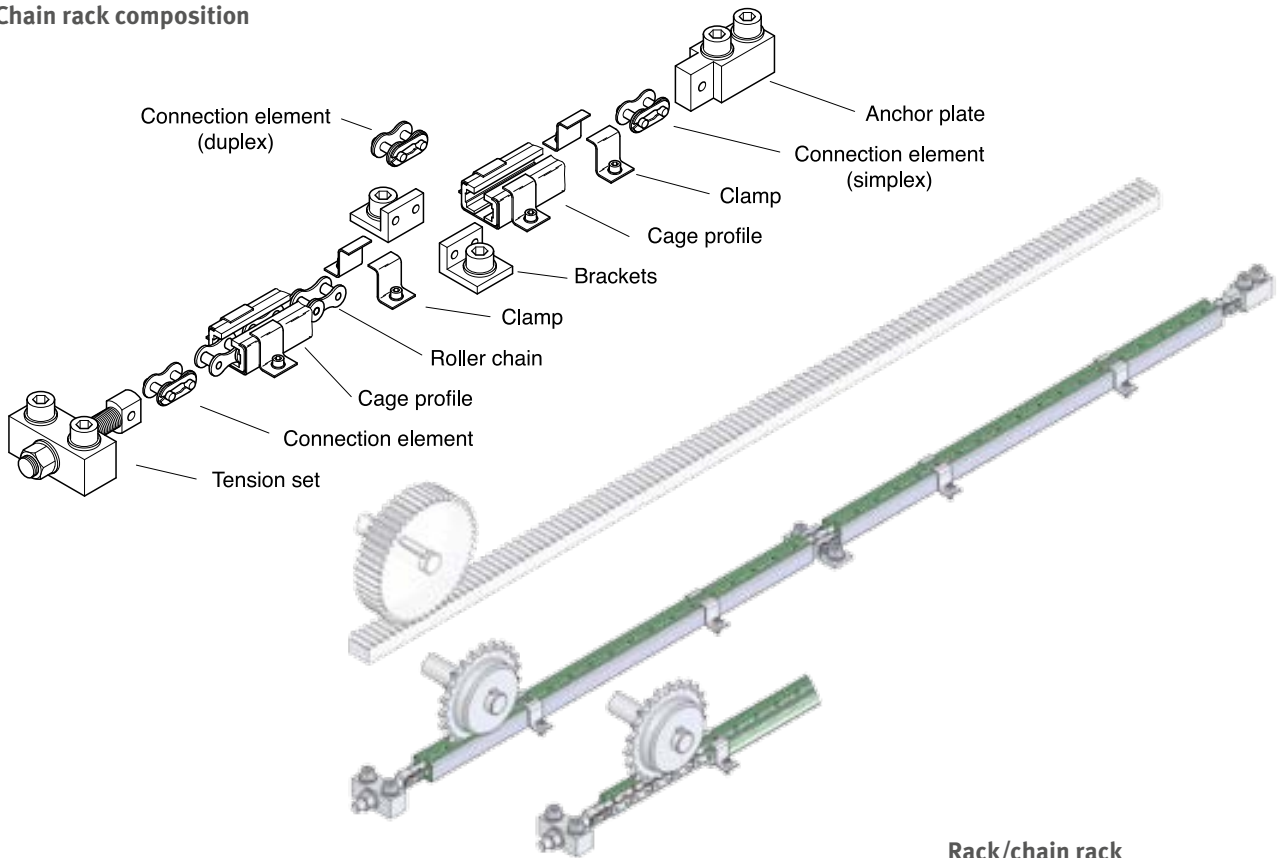
The clamping set is connected with the actual chain rack using a simplex chain connecting link. The chain is guided using a cage profile made of Material "S"[®]1000 Green. This is clasped by a steel C profile from the outside. The steel C profiles are fixed to the base using clamps. For chain lengths of more than 2,500 mm, fastening brackets are also provided. They are integrated into the rack using duplex connection elements. This prevents the chain rack from moving in the cage profile during start-up and deceleration. Chain racks are available in chain sizes of 1/2", 5/8", 3/4" and 1".

For the full range of chain racks and prices, see www.murtefeldt.com.

Advantages

- Less sensitive to tooth backlash changes. Alignment errors can thus be corrected through smaller sprocket widths
- High level of acoustic insulation
- High stability
- Cage profile can expand if temperature varies
- Simple assembly
- Economical alternative to milled racks

Chain rack composition



PROFILES FOR CONVEYING AND TRANSPORTATION

In the beverage, packaging, food, and frozen food sectors in particular, goods and products must be transported in a reliable manner that protects them from damage. We offer a wide range of products to meet this requirement.

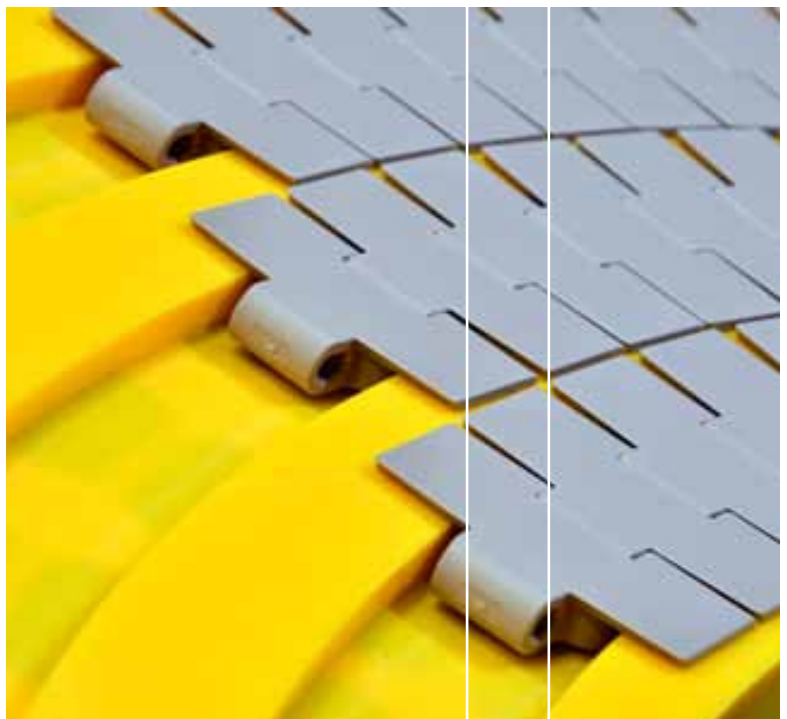
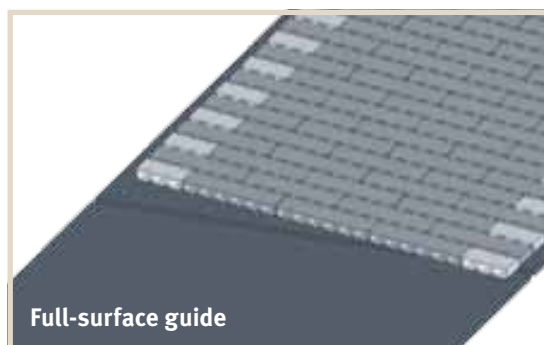
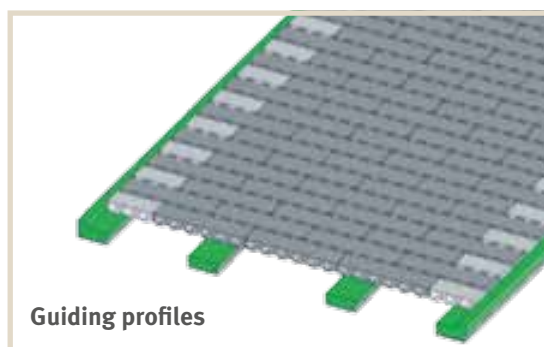
We are happy to manufacture products on the basis of your drawings to meet the demands of your custom conveying and transport tasks. For example, we can produce carriers and work piece bearers for your conveyor belts. You can also obtain accessories such as switches and star wheels quickly and economically and in line with your requirements.

Please contact our application technology department or one of our field staff. You can also join our consultants at an online conference where you can work together on your documents in real time.

For information on the required access software for online collaboration, see www.murtfeldt.com.

We offer the following products for conveying/ transportation technology:

- Sliding guides
- Rail guides
- Bands
- Clip-on profiles
- Profiles for slat band chains
- Curve guides for slat band chains



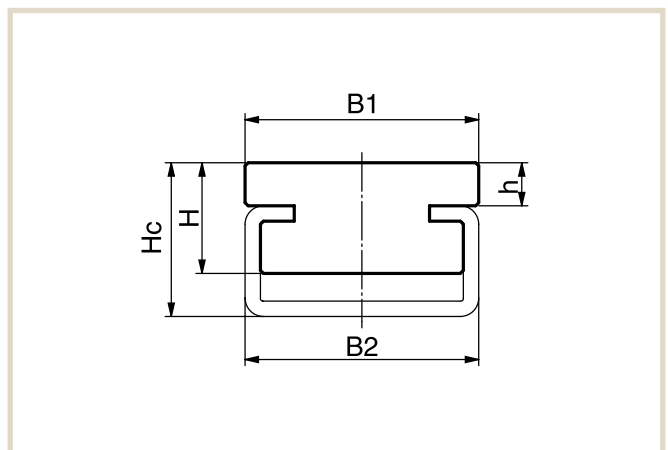
Sliding guides

SLIDING GUIDES TYPE CF



Type	C profile type	B1	B2	H	Hc	h	Article no.
CF	C1	20	24	5	6	1.0	211 010 001
							351 020 001
CF	C1	20	24	10	11	5.8	211 010 002
							351 020 001
CF	C3	20	20	10	14	4.0	211 010 003
							351 020 003
CF	C3	20	20	14	17	7.0	211 010 004
							351 020 003
CF	C3	20	20	16	20	10.0	211 010 005
							351 020 003
CF	C5	28	28	10	15	3.0	211 010 006
							351 020 005
CF	C5	28	28	14	18	6.0	211 010 007
							351 020 005
CF	C9	38	38	12	22	4.0	211 010 008
							351 020 009
CF	C9	38	38	18	25	7.0	211 010 009
							351 020 009
CF	C12	60	60	20	30	10.0	211 010 010
							351 020 012
CF	C4	50	50	18	20	10.0	211 010 011
							351 020 004
CF	C6	80	80	18	20	10.0	211 010 012
							351 020 006

Dimensions in mm



RAIL GUIDES

As insertion and clip profiles

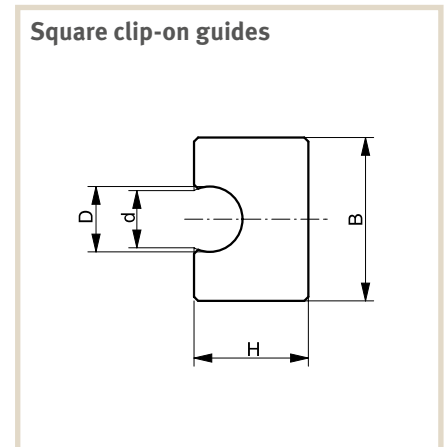
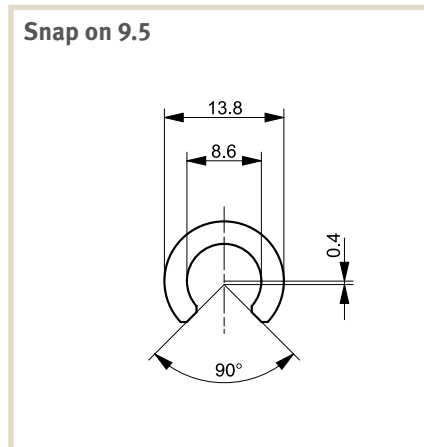
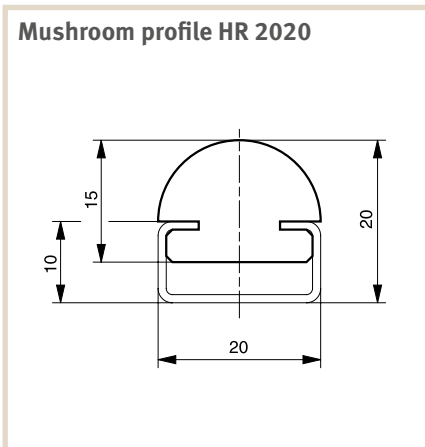


Here, we present a small selection of our wide range of profiles for exemplary purposes. For our full range, see www.murtefeldt.com.

Rail profile	Delivery form	Delivery length in mm	Production method	Original Material "S"®	Article no.
Mushroom profile HR 2020	profile	2000	milled	green	211 210 001
	C3	2000			351 020 003
	profile	2000	milled	black antistatic	211 210 002
	C3	2000			351 020 003
	profile	2000	extruded	green	211 210 003
	C3	2000			351 020 003

Dimensions in mm Extruded profiles made of Material "S"® Black are **not** antistatic.

* For milled profiles. Tolerances as per DIN 16941 for extruded profiles.





Murtfeldt plastic bands are ideally suited for transporting sensitive goods. They are available in three standard sizes. Intermediate and special dimensions are available on request.

We are happy to advise you on the correct choice of band. Please contact us.

Design

- Either in Original Material "S"® Green or Original Material "S"® Black Antistatic
- On request: Pre-treatment in the form of scraping and flaming on one side for later adhesion

Special designs

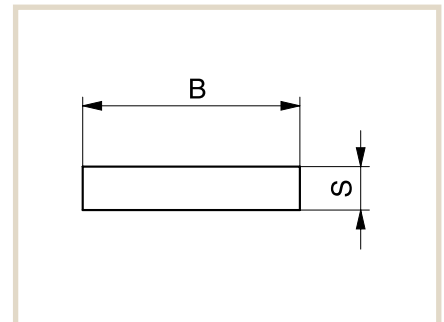
- 6, 8 and 10mm in widths of between 10 and 60mm

Applications

- Beverage, packaging, food, and frozen food sectors

Special properties

- Extremely good wear resistance
- High shock and impact resistance



Bands made from Original Material "S"®green

Width (B) x thickness (S)	Article no.
15 x 3	171 010 007
18 x 3	171 010 008
20 x 3	171 010 009
22 x 3	171 010 010
25 x 3	171 010 011
30 x 3	171 010 012
35 x 3	171 010 013
40 x 3	171 010 014
45 x 3	171 010 016
50 x 3	171 010 017
60 x 3	171 010 019
70 x 3	171 010 020
80 x 3	171 010 021
90 x 3	171 010 023
100 x 3	171 010 024
111 x 3	171 010 025

Width (B) x thickness (S)	Article no.
20 x 4	171 010 026
25 x 4	171 010 027
30 x 4	171 010 028
40 x 4	171 010 030
50 x 4	171 010 032

Width (B) x thickness (S)	Article no.
15 x 5	171 010 034
18 x 5	171 010 035
20 x 5	171 010 036
22 x 5	171 010 037
25 x 5	171 010 038
30 x 5	171 010 039
35 x 5	171 010 040
40 x 5	171 010 041
45 x 5	171 010 042
50 x 5	171 010 043
60 x 5	171 010 044

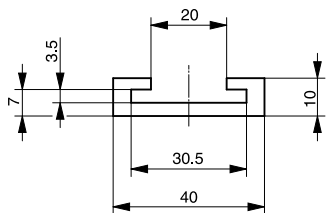
* Tolerances: Thickness ± 0.1 / width ± 0.5. Roll length on request

SLIP-ON PROFILES

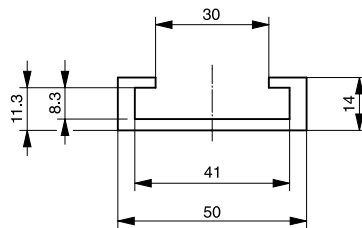


Here is a small selection of our extensive range of profiles.
View our complete range at www.murtefeldt.com.

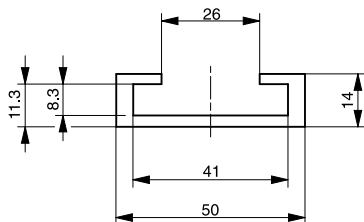
For flat steel, 30 × 3 milled/extruded



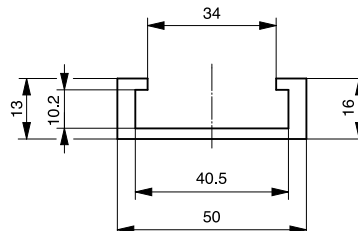
For flat steel, 40 × 8 milled



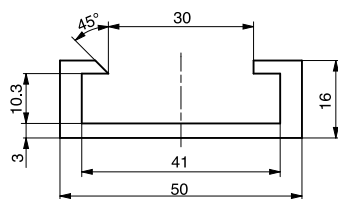
Plastic L profile for flat steel, 40 × 8 extruded



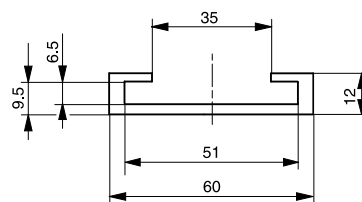
Plastic L profile for flat steel, 40 × 10 milled



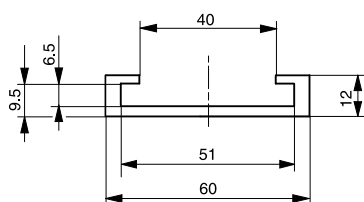
Plastic L profile for flat steel, 40 × 10 extruded



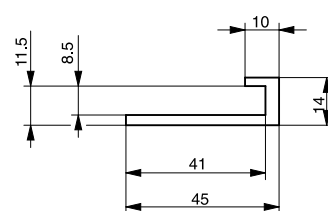
Plastic L profile for flat steel, 50 × 6 milled



Plastic L profile for flat steel, 50 × 6 extruded



Plastic L profile for flat steel, 40 × 8 milled

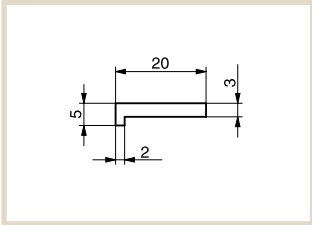


* For milled profiles. Tolerances as per DIN 16941 for extruded profiles.

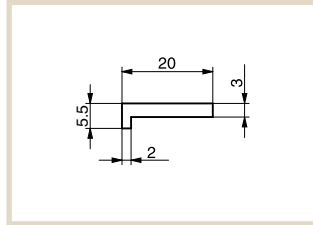
PROFILES FOR SLAT BAND CHAINS



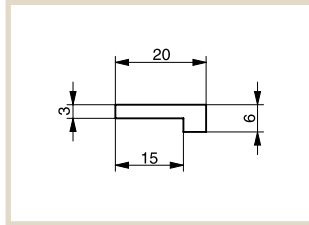
L profile 20 x 5



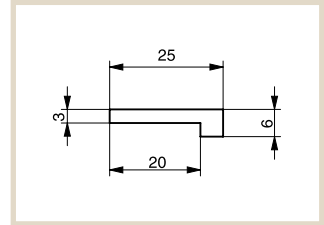
L profile 20 x 5.5



L profile 20 x 6

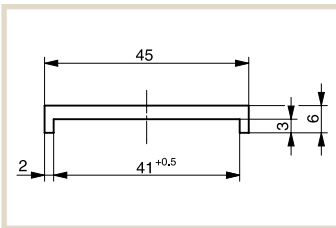


L profile 25 x 6

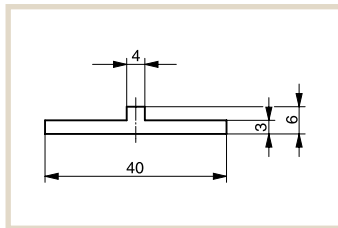


Profile	Roll length (in m)	Production method	Original Material "S" [®]	Article no.
L profile 20 x 5	35	milled	green	211 310 034
L profile 20 x 5.5	50	extruded	green	211 310 044
L profile 20 x 6	45	milled	green	211 310 035
L profile 25 x 6	45	milled	green	211 310 036

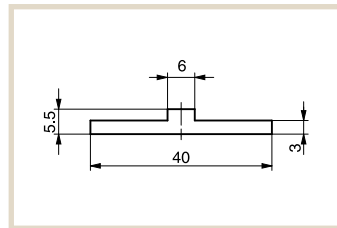
Slide profile type U 45 x 6



Centre profile 40 x 6

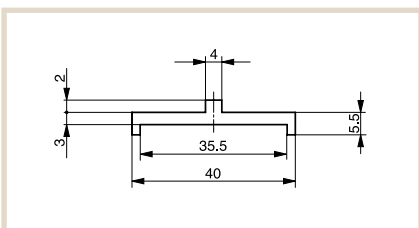


Centre profile 40 x 5.5

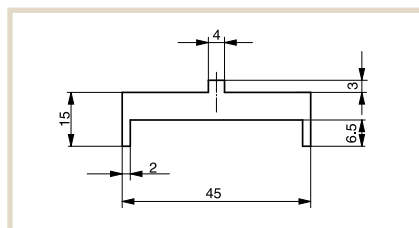


Profile	Roll length (in m)	Production method	Original Material "S" [®]	Article no.
Slide profile type U 45 x 6	35	milled	green	211 310 037
Centre profile 40 x 6	35	milled	green	211 310 033
Centre profile 40 x 6	50	extruded	green	211 310 042
Centre profile 40 x 5.5	50	extruded	green	211 310 001

Bridge centre profile 40 x 7.5



Bridge centre profile 45 x 15



Profil	Roll length (in m)	Production method	Original Material "S" [®]	Article no.
Bridge centre profile 40 x 7.5	50	extruded	green	211 310 043
Bridge centre profile 45 x 15	6	extruded	green	211 310 002

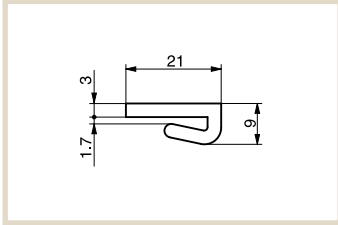
Dimensions in mm Extruded profiles made of Material "S"[®] black are **not** antistatic.

* For milled profiles. Tolerances as per DIN 16941 for extruded profiles.

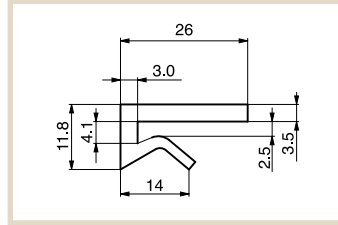
PROFILES FOR SLAT BAND CHAINS



Flat clamping profile 21 x 9

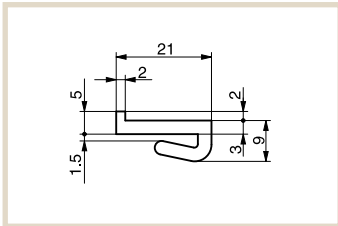


Flat clamping profile 26 x 11.8

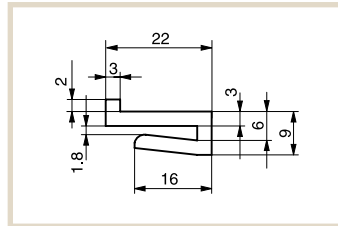


Profile	Roll length (in m)	Production method	Original Material™S™®	Article no.
Flat clamping profile 21 x 9	50	extruded	green	211 310 004
Flat clamping profile 26 x 11.8	50	extruded	natural	211 310 039

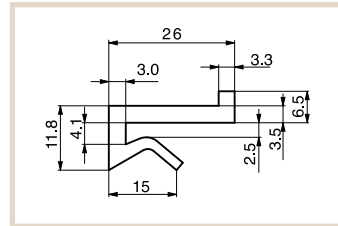
L clamping profile 21 x 11



L clamping profile 22 x 11

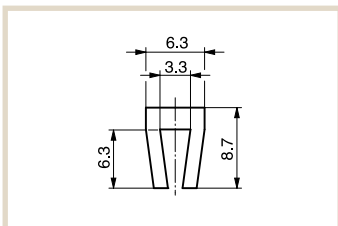


L clamping profile 26 x 14.8

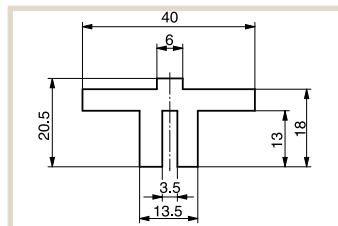


Band profile	Roll length (in m)	Production method	Original Material™S™®	Article no.
L clamping profile 21 x 11	50	extruded	green	211 310 005
L clamping profile 22 x 11	65	extruded	green	211 310 041
L clamping profile 26 x 14.8	30	extruded	natural	211 310 040

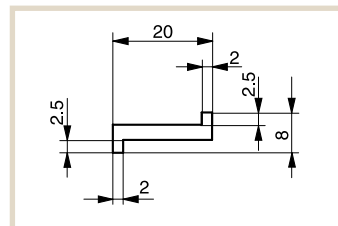
Clamping U profile 6.3 x 8.7



T clip-on profile 40 x 20.5



Z profile 20 x 8



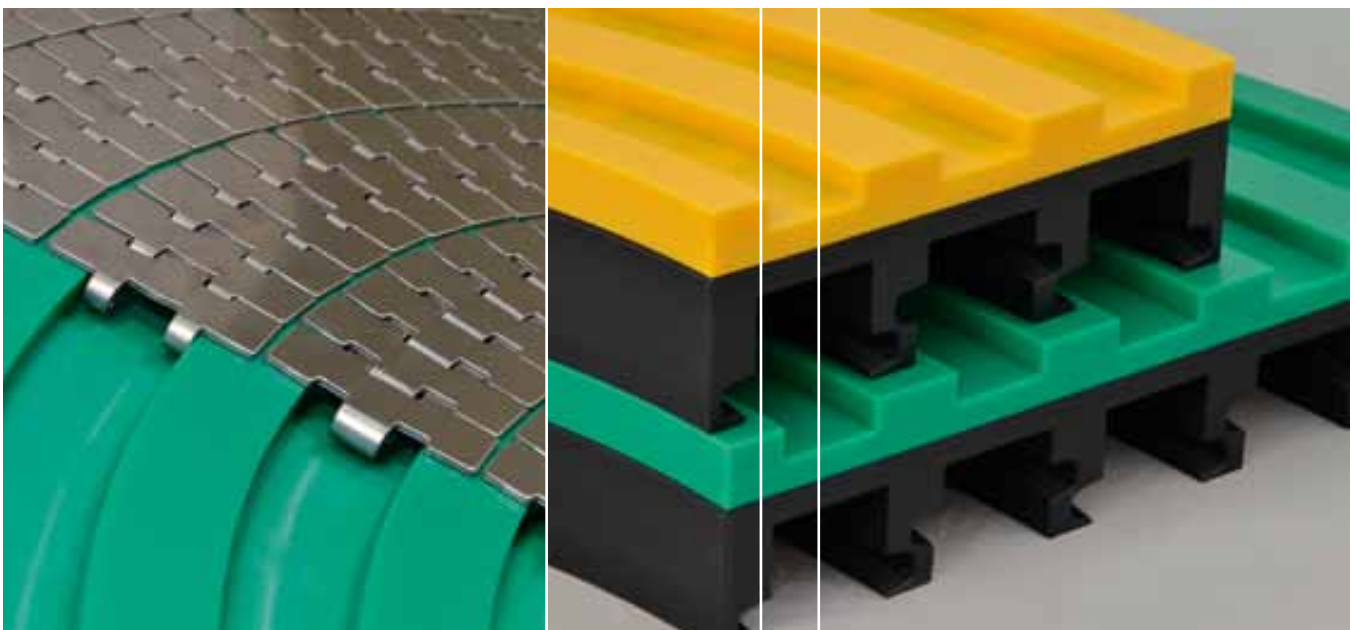
Profile	Roll length (in m)	Production method	Original Material™S™®	Article no.
Clamping U profile 6.3 x 8.7	50	extruded	natural	211 310 007
T clip-on profile 40 x 20.5	2	milled	green	211 310 030
Z profile 20 x 8	35	milled	green	211 310 031
	50	extruded	green	211 310 038

CURVE GUIDES FOR SLAT BAND CHAINS

Made-to-measure or off the shelf

Steel slat-band chains are preferable for the transport of bottles and components, like coupling components, bearings or gears. To significantly reduce abrasion as well as background noise when handling these components, Murtfeldt recommends the use of plastic curve guides. These guides are ideal for the transport of sensitive products, avoiding breakage of glass bottles, preventing crushing with dairy products and avoiding scratching with PET bottles.

These curve guides form part of Murtfeldt's standard range. However, Murtfeldt's capacity to produce curve guides tailored to the customers' specific requirements is even greater.



CURVE GUIDES FOR SLAT BAND CHAINS

Shown with TAB guide, with and without straight ends

Our production plant is state of the art and professionally set up for the production of individual TAB, dovetail and magnetic curve guides. We can make your detailed requirements a reality. Download the TAB design questionnaire below on our website, as well as the questionnaires for dovetail and magnetic curve guides.

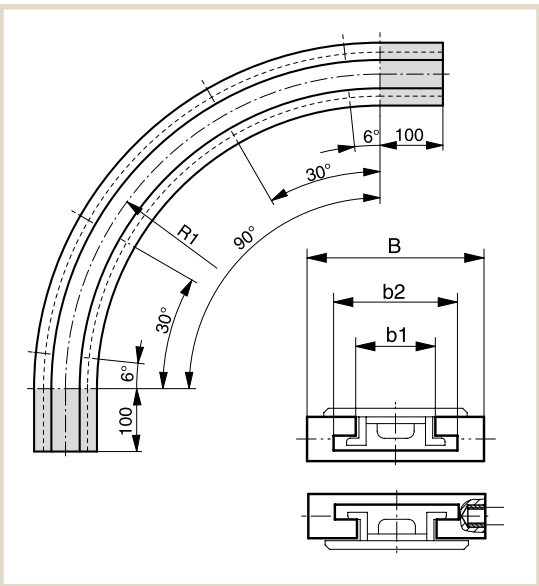
Further questionnaires are available to download at www.murtfeldt.com/services/design-questionnaires/

Please use the questionnaire to provide us with the necessary technical data or get in touch with our application engineers who will be pleased to help you immediately with producing the necessary drawings.

YOUR CONTACT DETAILS	
Name, first name	
Company	
Postal code, city	
Street	
Phone	
Fax	
E-Mail	

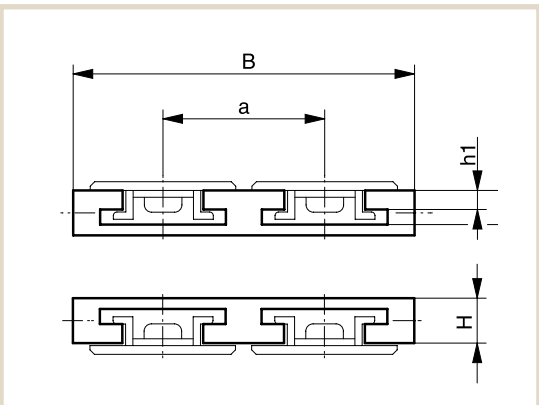
TEAM APPLICATION TECHNOLOGY
We are happy to provide free, non-binding advice on selecting the suitable design and material of your curve guide.
Please send the fill-out form to: technik@murtfeldt.de
or print it out and send it by fax to: Fax 0049 (0) 231 20609-518

DIMENSIONS IN MM			
H		R1	Segment angle
B		R2	Length GE
b1		R3	a
b2		R4	
h1		R5	
h2		R6	

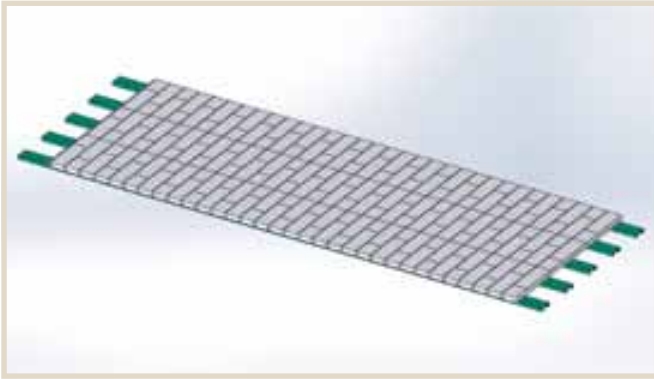


BAUART				
Countersunk hole	YES	NO	Anzahl	/
Thread insert	YES	NO	Anzahl	/
Material for curve guide				
Type of chain				

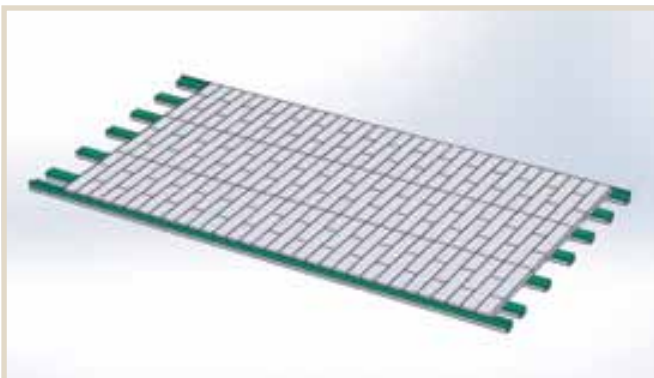
REMARKS



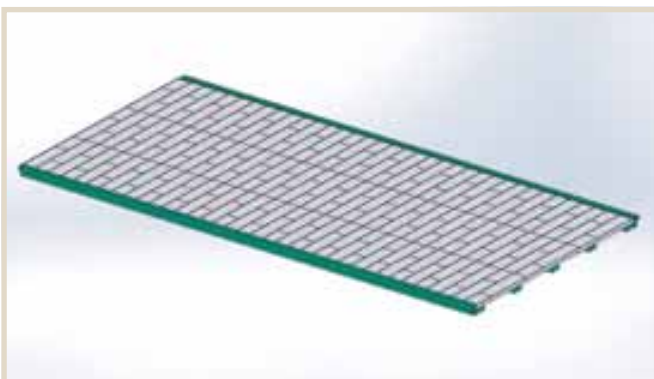
GUIDES FOR MODULAR BELTS



Slip-on profiles



CF profiles



Flat profiles with hold-down clips

Conveyor belts are highly modular and can even be integrated into the most complex systems. Murtfeldt Plastics produces guides for modular belts, manufactured from highly wear-resistant, low-friction plastics like Original Material "S"[®] green, "S"[®] plus+ LF or "S"[®] plus+ ESD. These guides are used as solid sliding bases, and also as CF profiles, slip-on profiles or sliding guides with tongue and groove in a straight or an arrow-shaped arrangement. You will find our solutions in almost all sectors, in the packaging industry, as well as in filling plants or in the automotive sector.

At a glance: Guides for modular chains

- Flat profiles
- Profiles with hold-down clips
- Slip-on profiles (C for flat steel)
- CF profiles
- Flat profiles with tongue and groove
- V-shaped flat profiles
- Solid guides (based on a drawing)

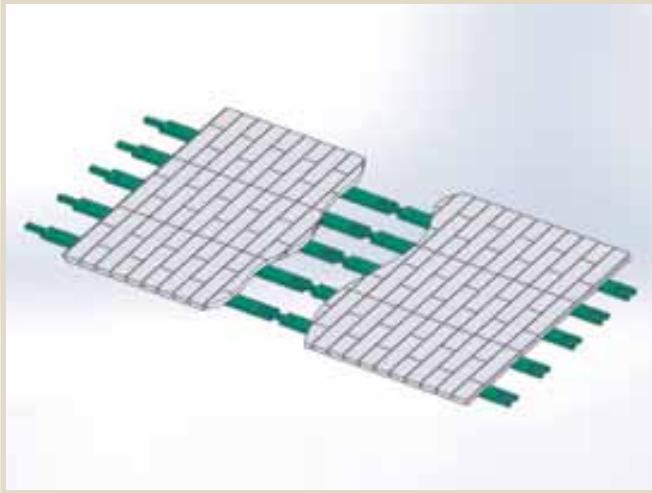
Materials

- Original Material "S"[®] plus+ LF
- Original Material "S"[®] plus+ LF ESD
- Original Material "S"[®] plus+ ESD
- Original Material "S"[®] plus+ Bright ESD
- Original Material "S"[®] black antistatic

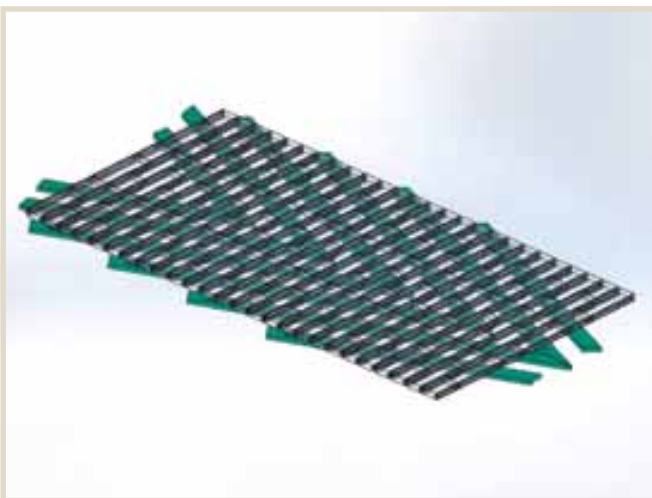
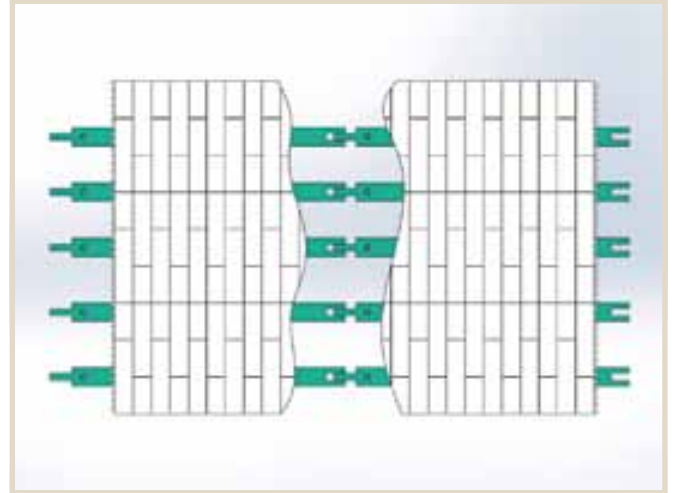
Benefits

- Low sliding friction
- Excellent wear resistance
- No static charge depending on the design

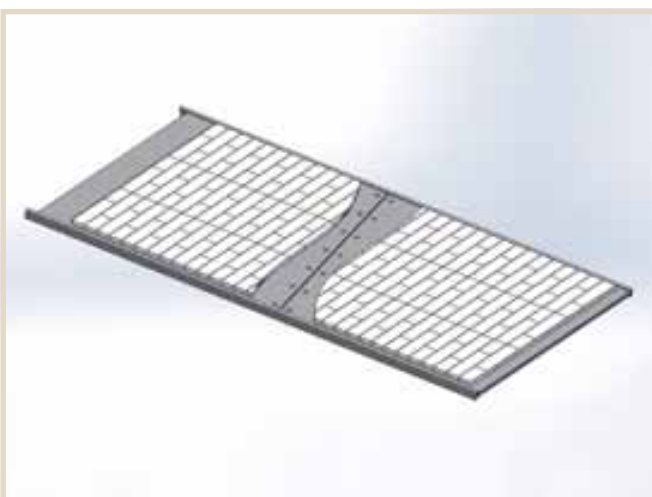
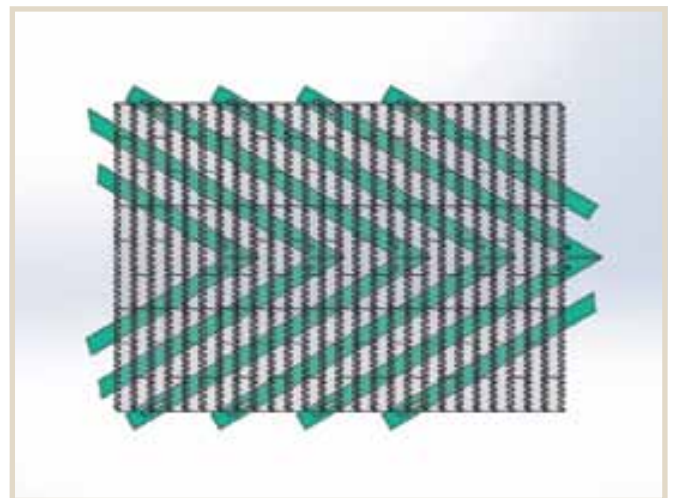
GUIDES FOR MODULAR BELTS



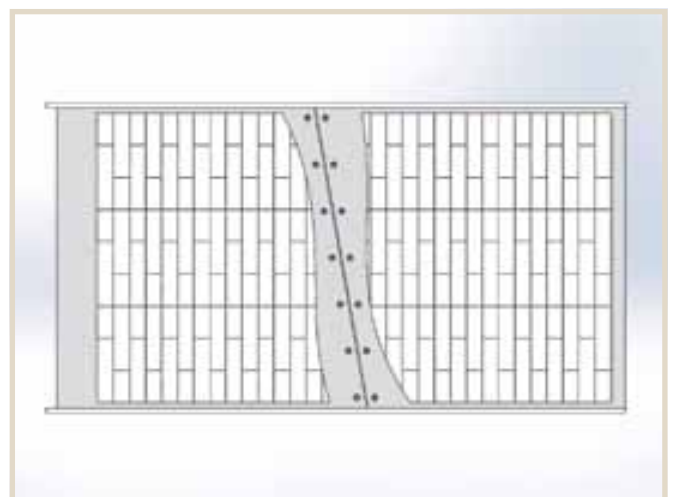
Flat profiles with tongue and groove



Arrow shape



Solid sliding base





Heßlingsweg 14 – 16
D-44309 Dortmund
Tel. +49 231 20609-0
Fax +49 231 20609-61527
www.murtfeldt.com